

Parking

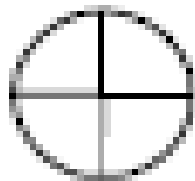
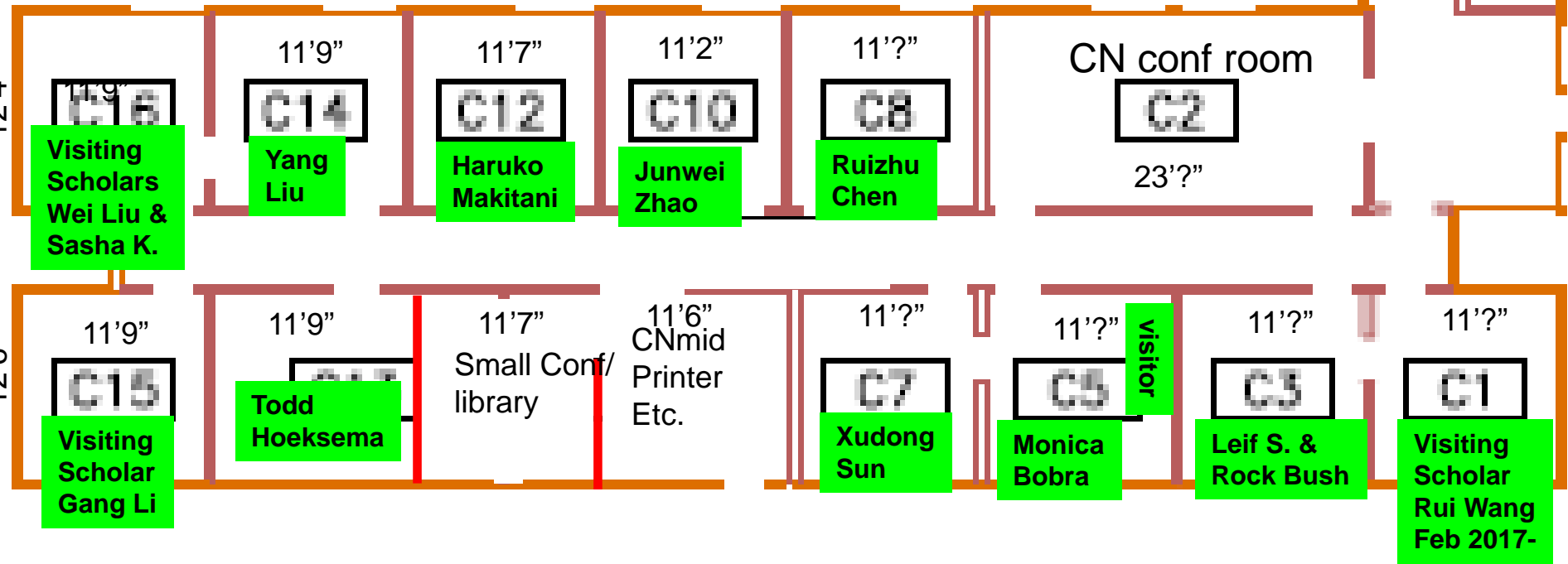
Cypress North

P&A 1st floor

P&A Basement

Parking
PS 2

10 single offices, 1 shared by 2 office
 1 conf room
 1 Library, 1 entry/common area

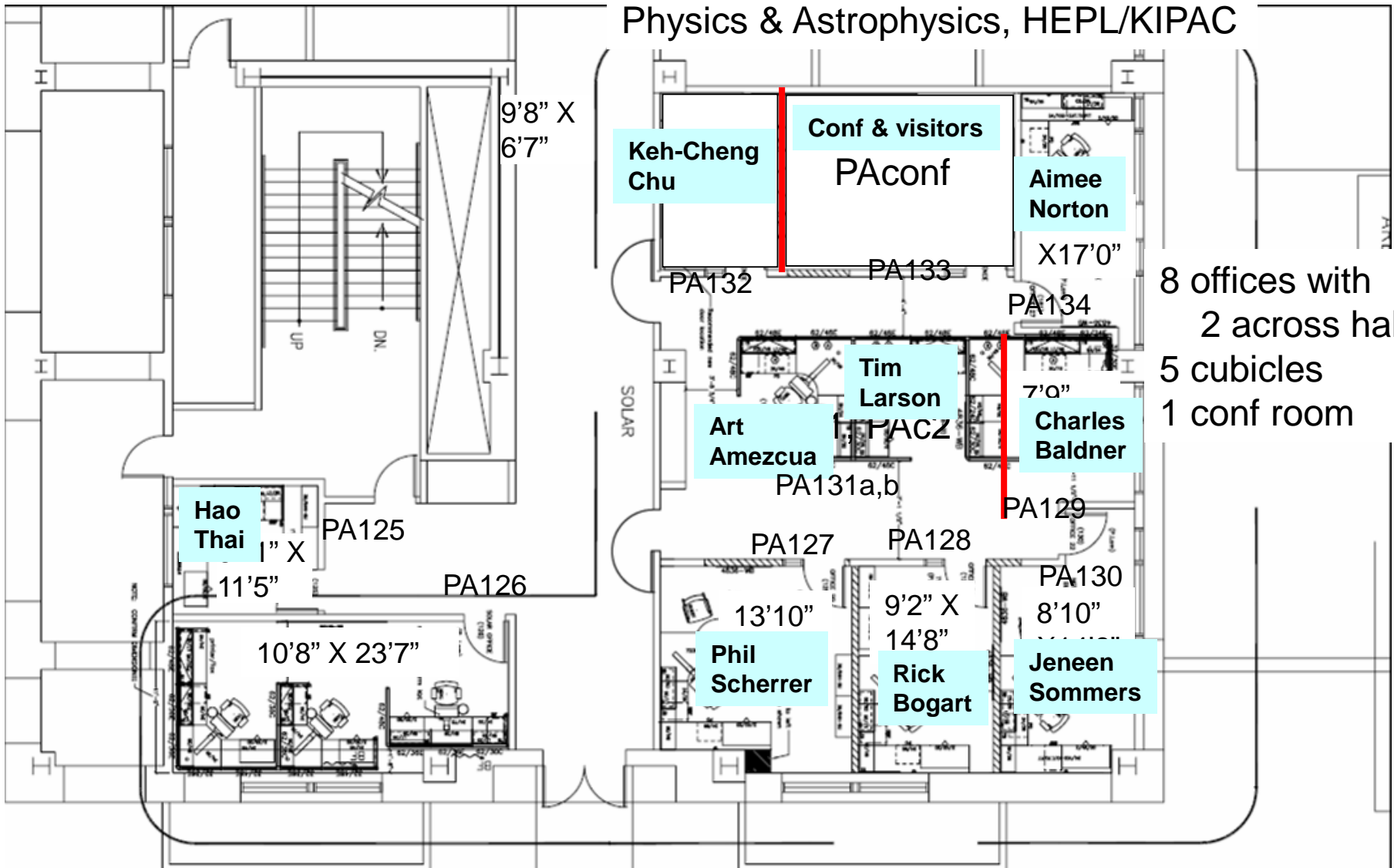


N



Cypress North - annotations added.

Physics & Astrophysics, HEPL/KIPAC



8 offices with
2 across hall
5 cubicles
1 conf room

DISCLAIMER

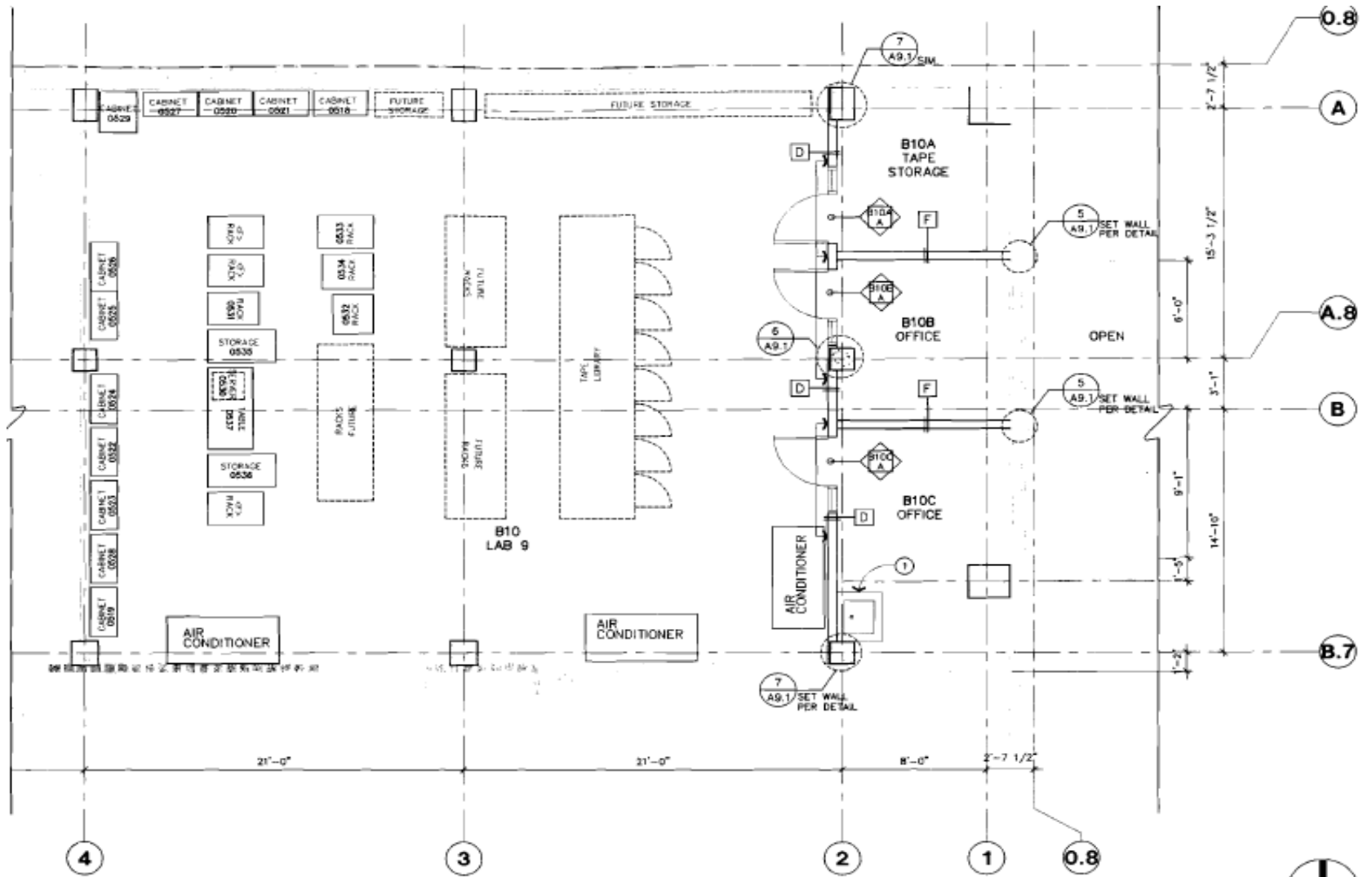
THIS DOCUMENT AND ALL ASSOCIATED PRICING, DESIGN OR PRODUCT INFORMATION IS THE PROPERTY OF PACIFIC OFFICE DESIGNS. IT IS SUBMITTED CONFIDENTIALLY AND MAY NOT BE USED FOR COMPETITIVE QUOTATION OR REPRODUCED WITHOUT PRIOR WRITTEN PERMISSION FROM PACIFIC OFFICE DESIGNS. ALL AUTHORIZED REPRODUCTIONS IN WHOLE OR IN PART, SHALL BEAR OR REFER TO THIS NOTE. IT IS THE RESPONSIBILITY OF THE FACILITY REPRESENTATIVE TO VERIFY THAT WALL STRUCTURES COMPLY WITH CURRENT STATE, FEDERAL, AND LOCAL CODES FOR THE INSTALLATION OF MODULAR EQUIPMENT. PACIFIC OFFICE DESIGNS DOES NOT ASSUME RESPONSIBILITY FOR OBTAINING ENGINEERING CALCULATIONS AND PERMITS THAT MAY BE REQUIRED FOR THIS INSTALLATION.

client	Stanford University
project	Physics Building – SOLAR
date	December 21, 2006
scale	Not To Scale

**pacific
office
designs**

1916 Villarita Drive
Campbell, CA 98008
408-892-5051 tel
408-378-3764 fax

Solar Computer Room, Phys & Astro basement B10



BASEMENT FLOOR PLAN



1/4"=1'-0"