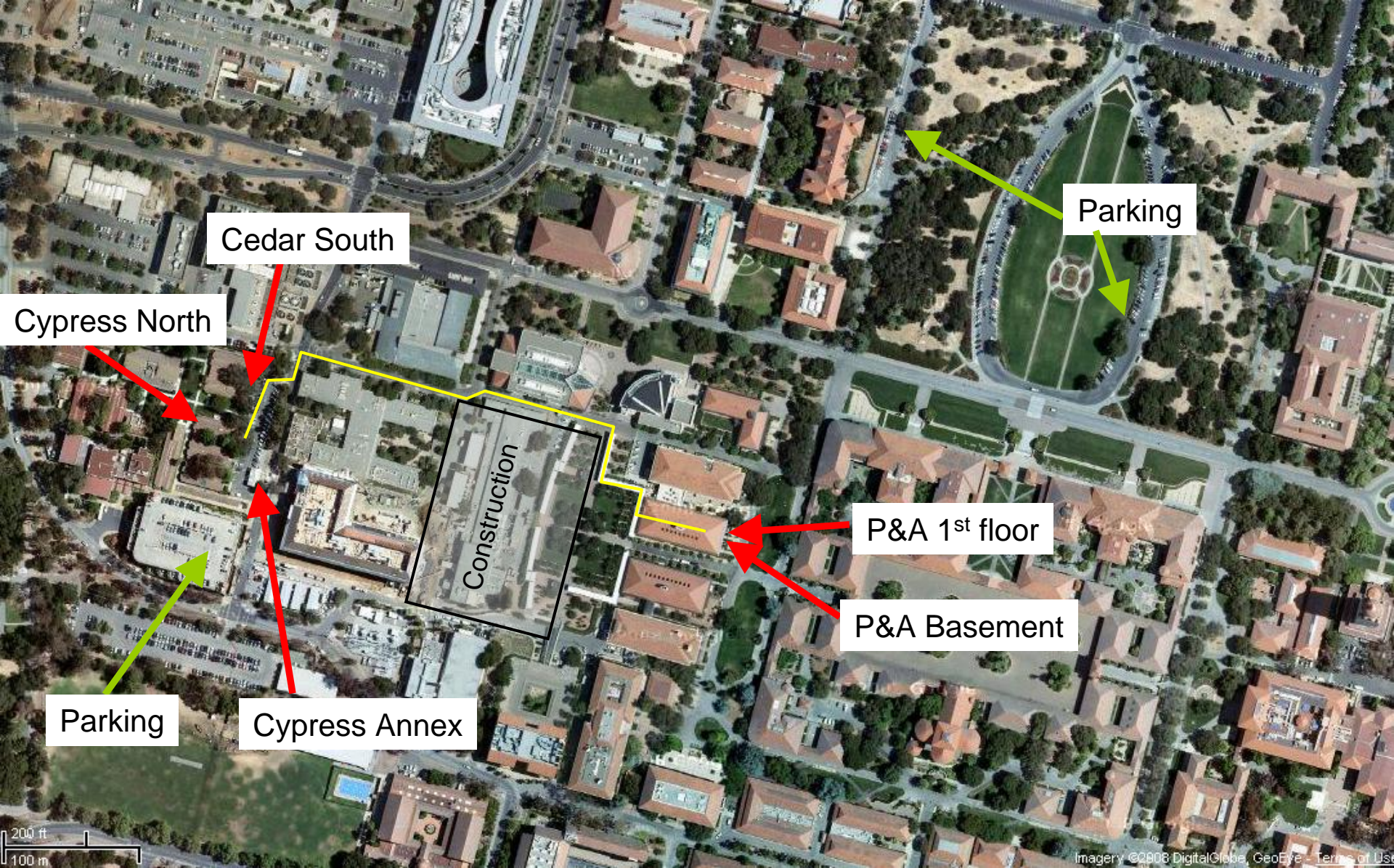
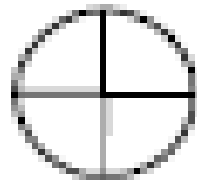
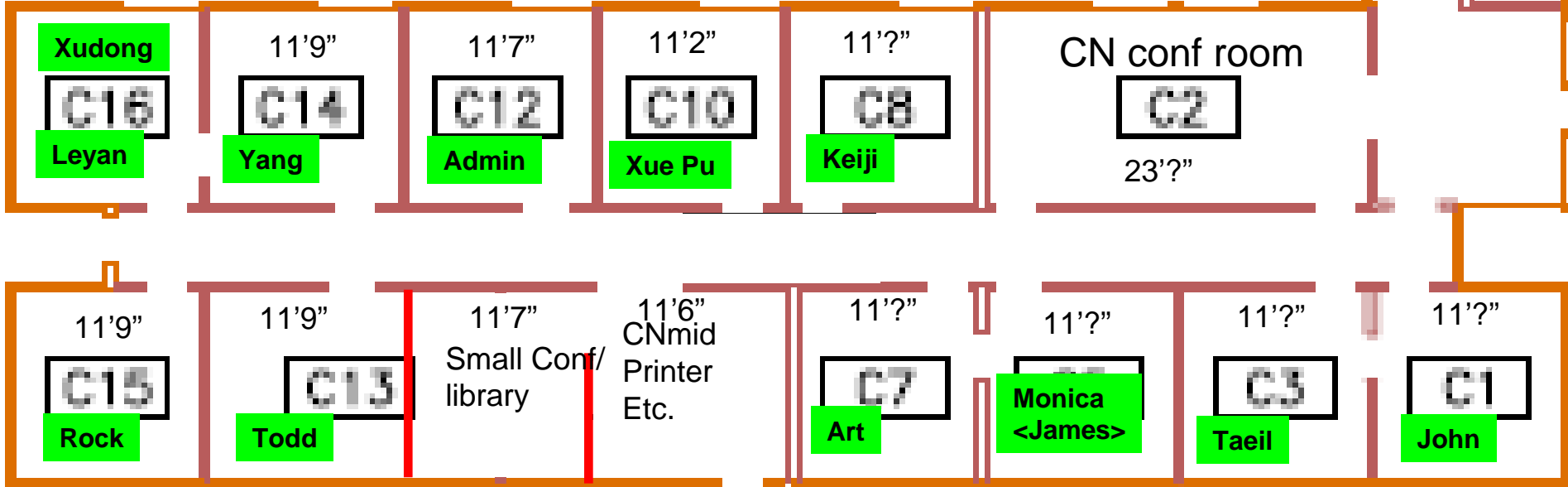


Cypress to P&A = 400m via Via Pueblo



10 single offices, 1 shared by 2 office  
1 conf room  
1 Library, 1 entry/common area

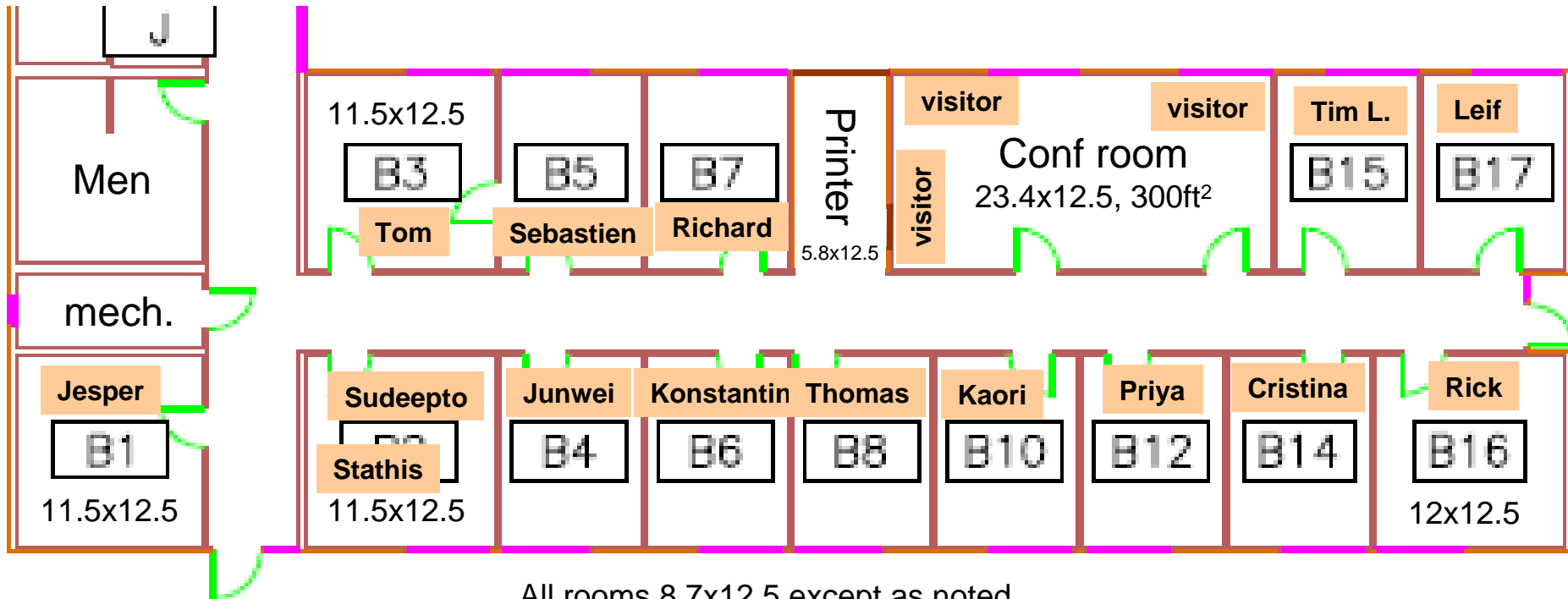


N



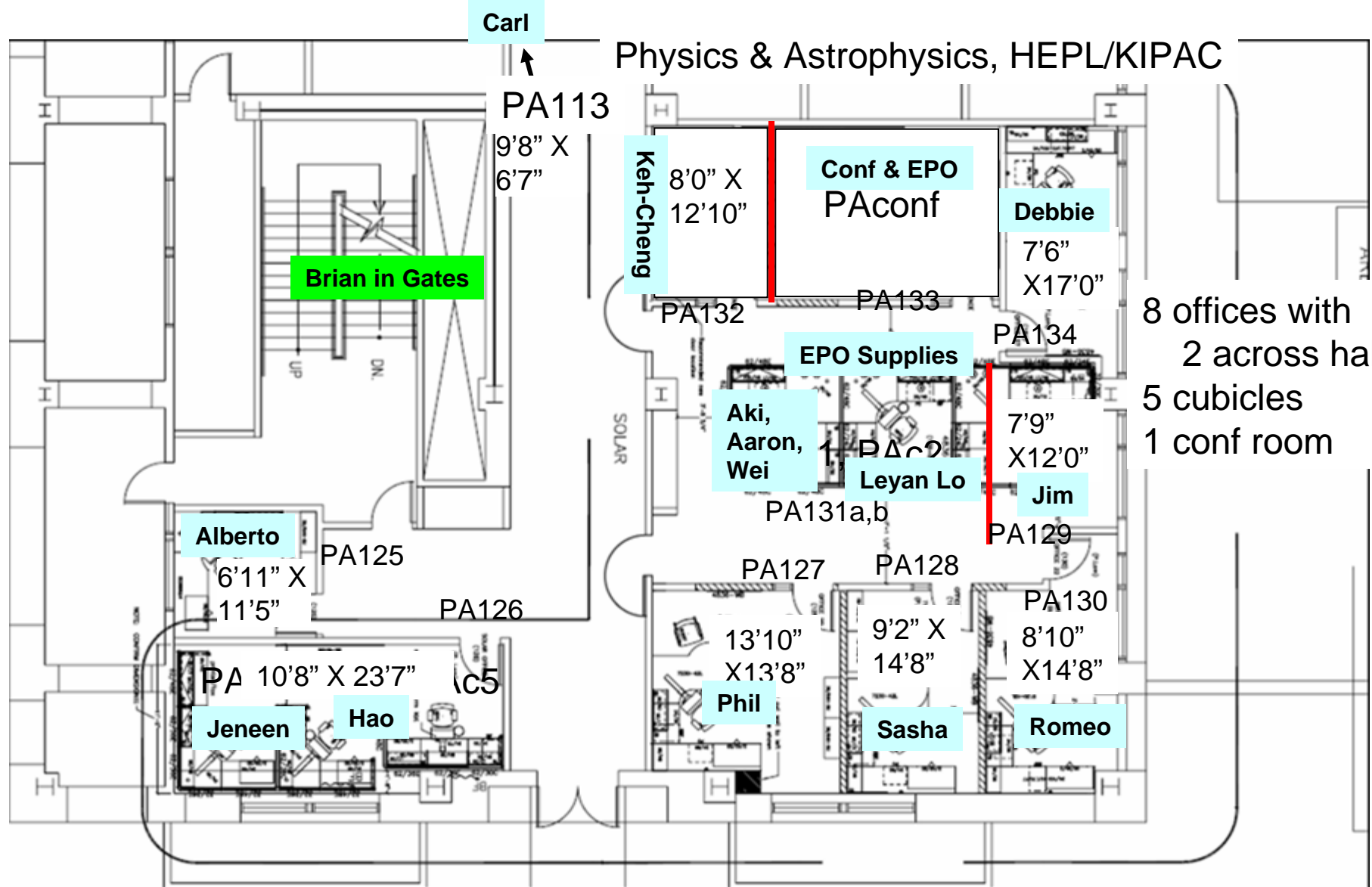
Cypress North - annotations added.

13 offices  
1 conf or cubicle room



Cedar South – After April 2008

# Physics & Astrophysics, HEPL/KIPAC



8 offices with  
2 across hall  
5 cubicles  
1 conf room

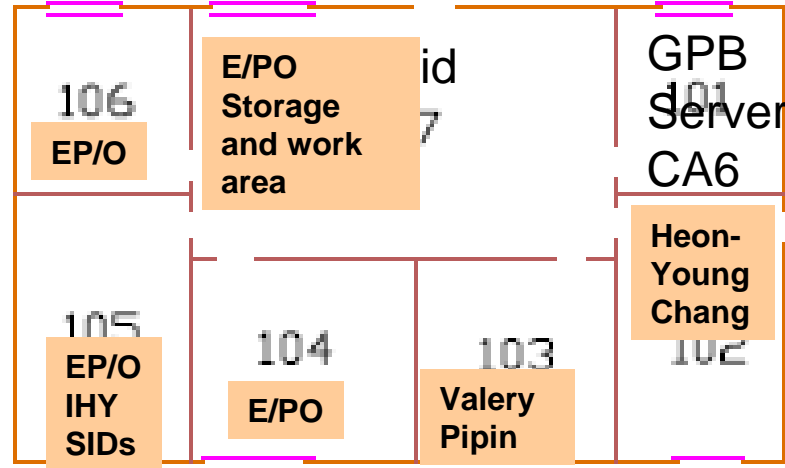
## DISCLAIMER

THIS DOCUMENT AND ALL ASSOCIATED PRINGS, DESIGN OR PRODUCT INFORMATION IS THE PROPERTY OF PACIFIC OFFICE DESIGNS. IT IS SUBMITTED CONFIDENTIALLY AND MAY NOT BE USED FOR COMPETITIVE QUOTATION OR REPRODUCED WITHOUT PRIOR WRITTEN PERMISSION FROM PACIFIC OFFICE DESIGNS. ALL AUTHORIZED REPRODUCTIONS IN WHOLE OR IN PART, SHALL BEAR OR REFER TO THIS NOTE. IT IS THE RESPONSIBILITY OF THE FACILITY REPRESENTATIVE TO VERIFY THAT WALL STRUCTURES COMPLY WITH CURRENT STATE, FEDERAL, AND LOCAL CODES FOR THE INSTALLATION OF MODULAR EQUIPMENT. PACIFIC OFFICE DESIGNS DOES NOT ASSUME RESPONSIBILITY FOR OBTAINING ENGINEERING CALCULATIONS AND PERMITS THAT MAY BE REQUIRED FOR THIS INSTALLATION.

|         |                          |
|---------|--------------------------|
| client  | Stanford University      |
| project | Physics Building – SOLAR |
| date    | December 21, 2006        |
| scale   | Not To Scale             |

**pacific  
office  
designs**

1916 Vilarita Drive  
Campbell, CA 98008  
408-892-5051 tel  
408-378-3764 fax



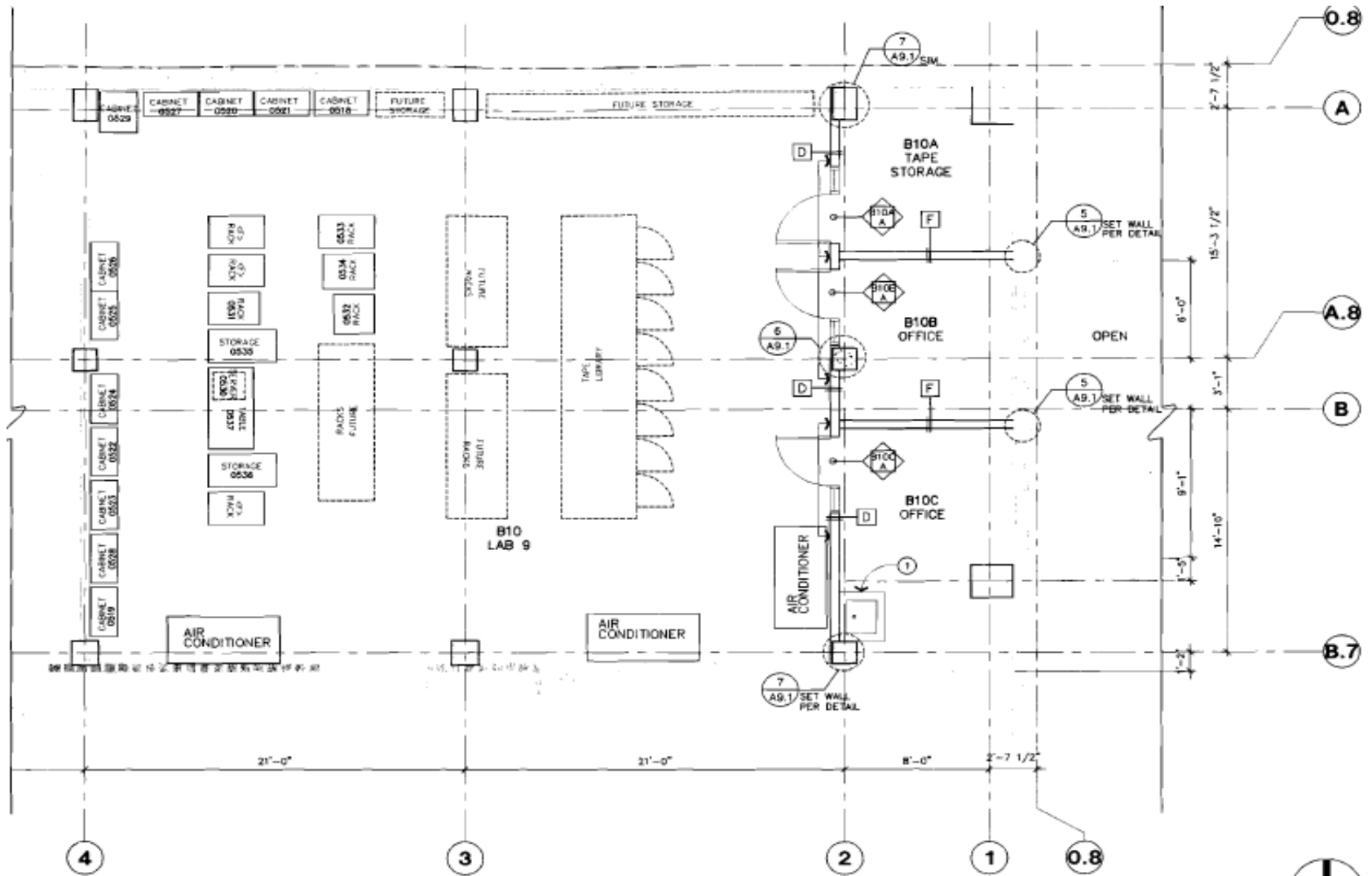
3 offices  
1 central room  
Other rooms GPB

Solar group offices 102-104



Cypress Annex

# Solar Computer Room, Phys & Astro basement B10



**BASEMENT FLOOR PLAN**



1/4"=1'-0"