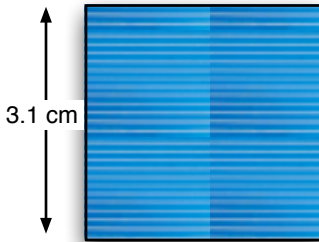


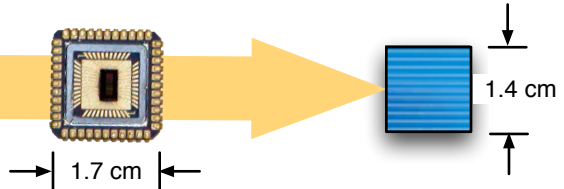
The "Power" of Low Power Electronics (LPE)

**Conventional
Reed-Solomon Encoder
dissipates 350 mW...**



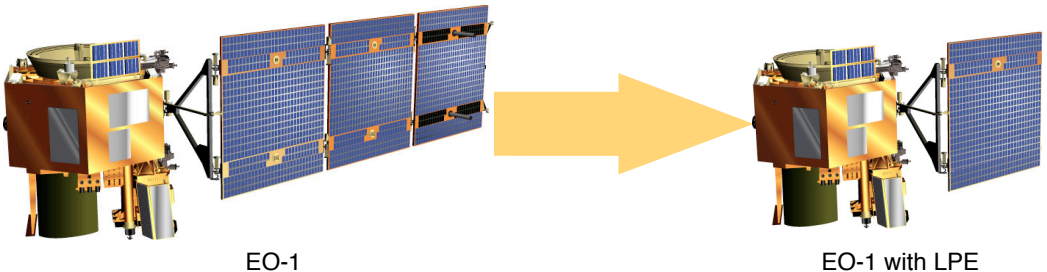
...requires 9.6 cm² of solar cells

**Low-Power Electronics
Reed-Solomon Encoder
dissipates just 67 mW...**



**...requires only
1.8 cm² of solar cells**

When Low-Power Electronics is available system-wide...



**...equivalent spacecraft and instrument capability at just
30% of the power required for conventional solutions**