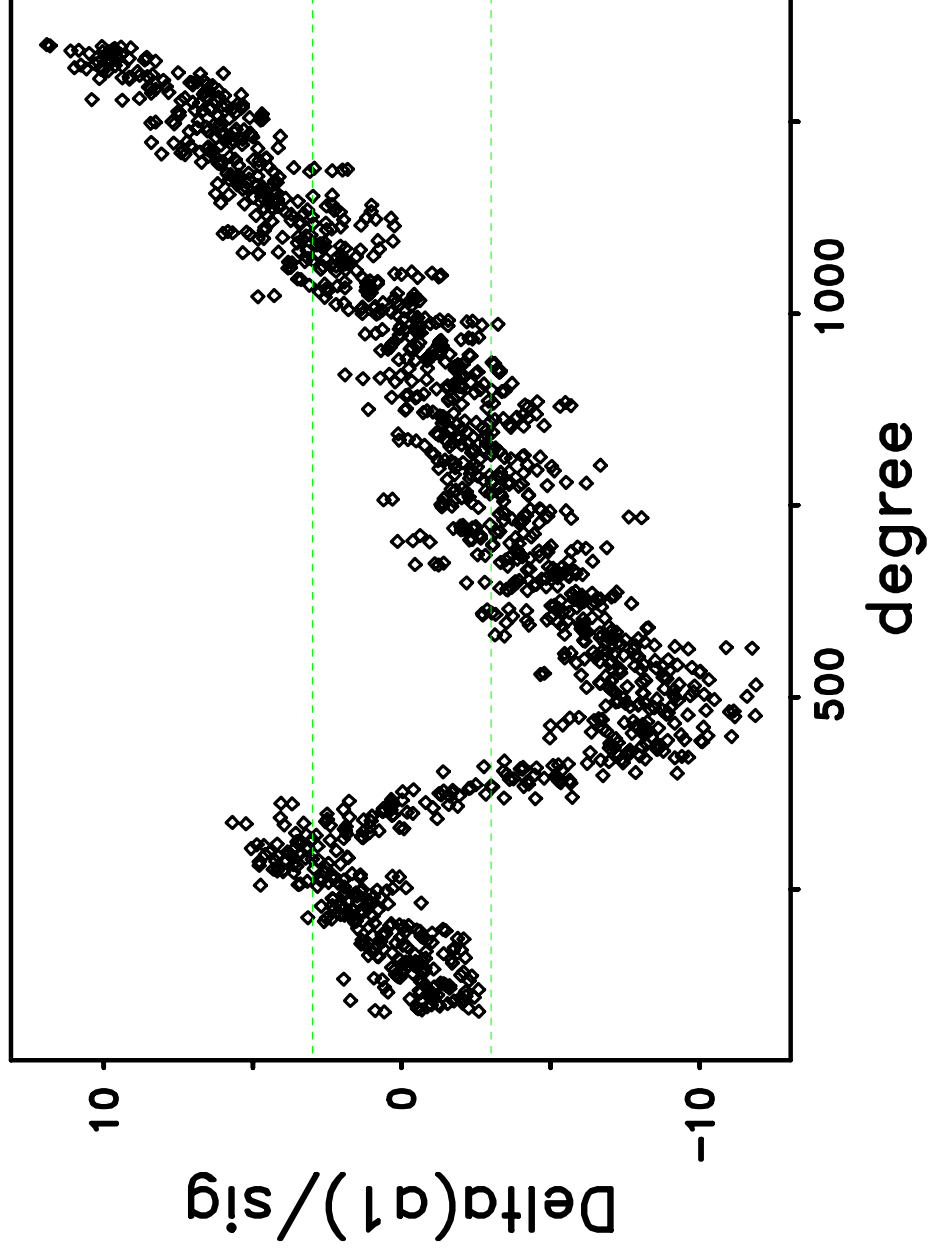
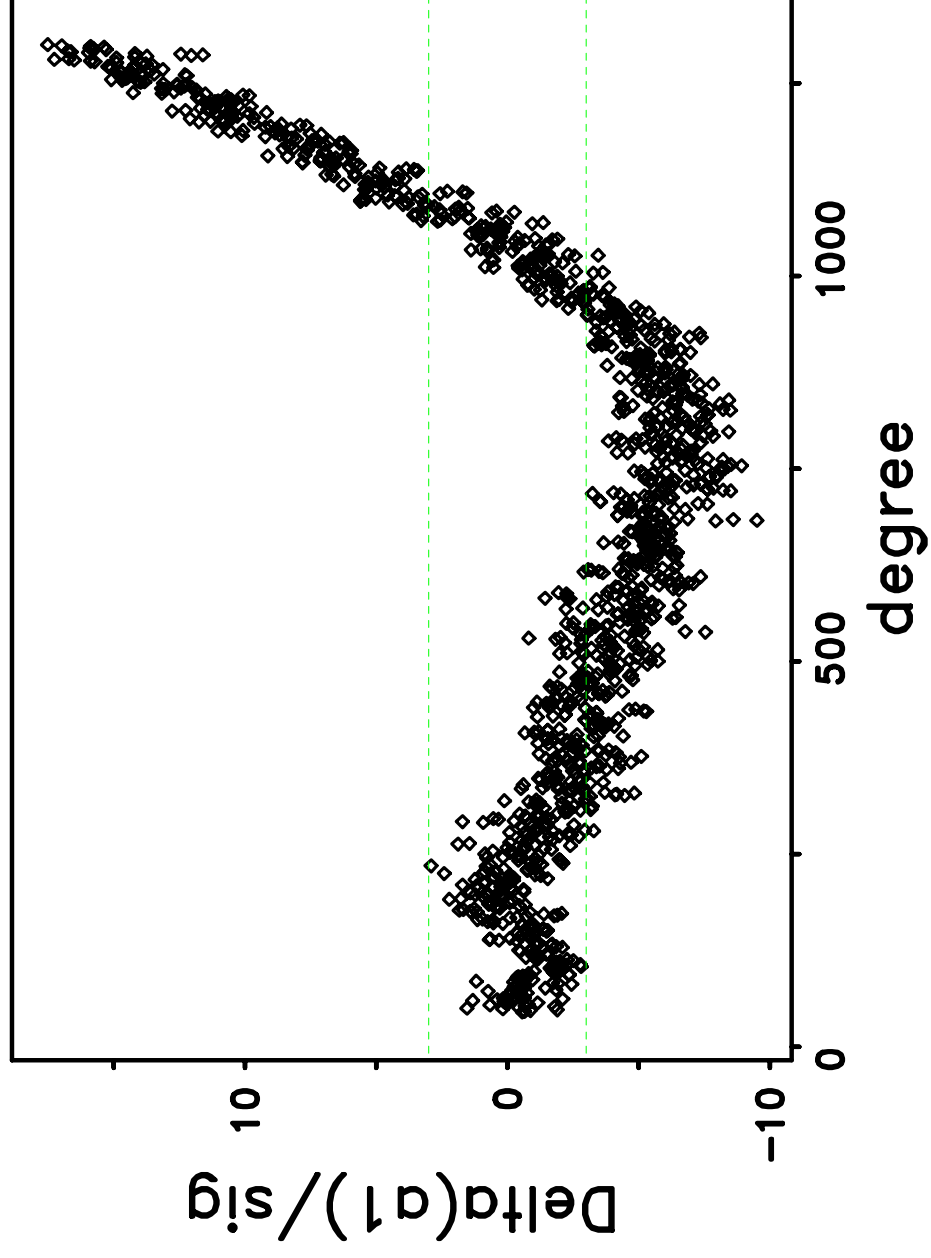


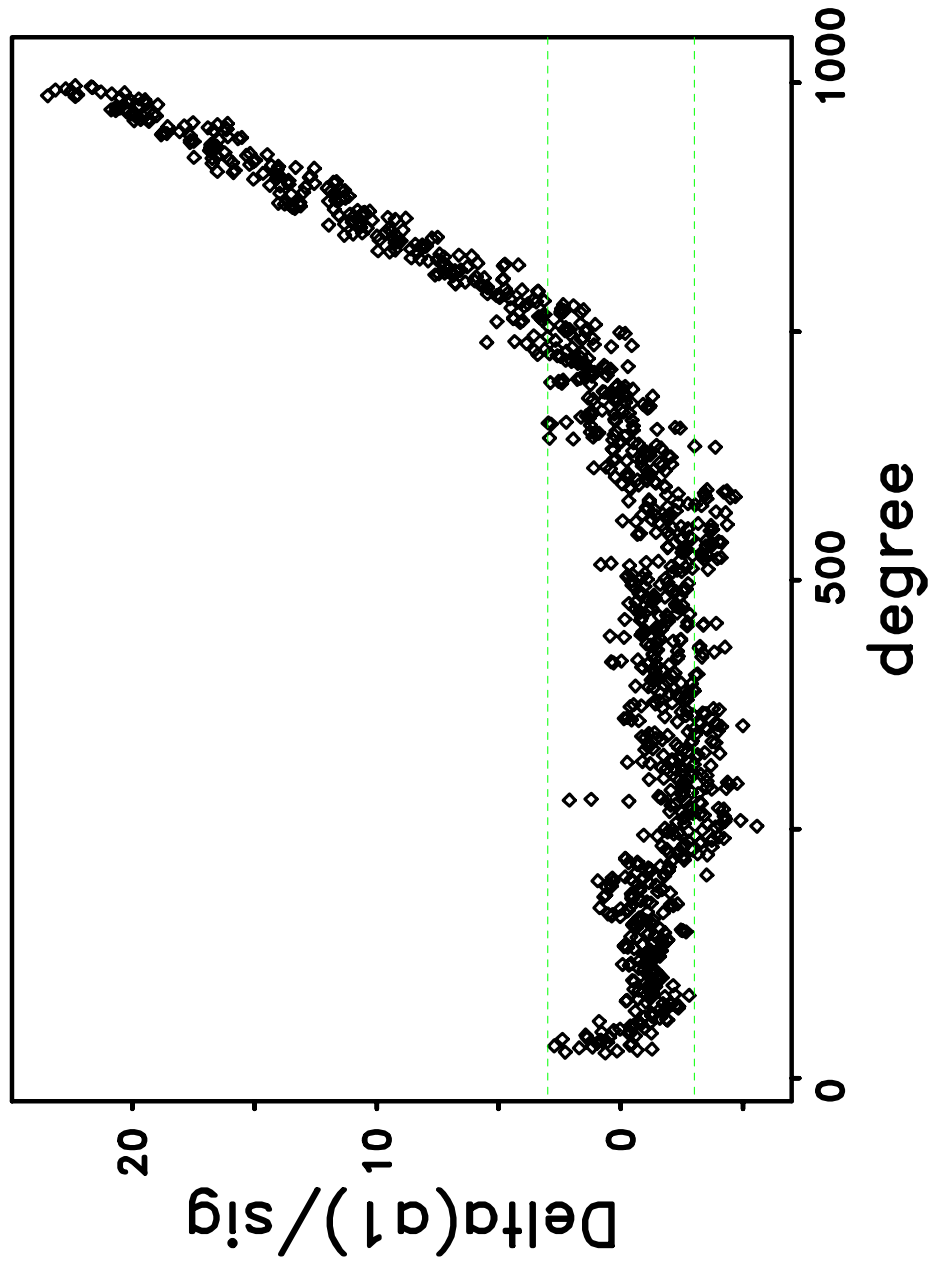
nv = 0, SSQ = 2.972E+04  
/home/jreiter/USC/wmltp/wmltp/mdi03d96/aux/HMI.100430to0710.mpts.v5c.spl.mod.da t  
rexp-3.lexp-1/splittings.out.6  
Thu Jan 21 18:39:14 2021



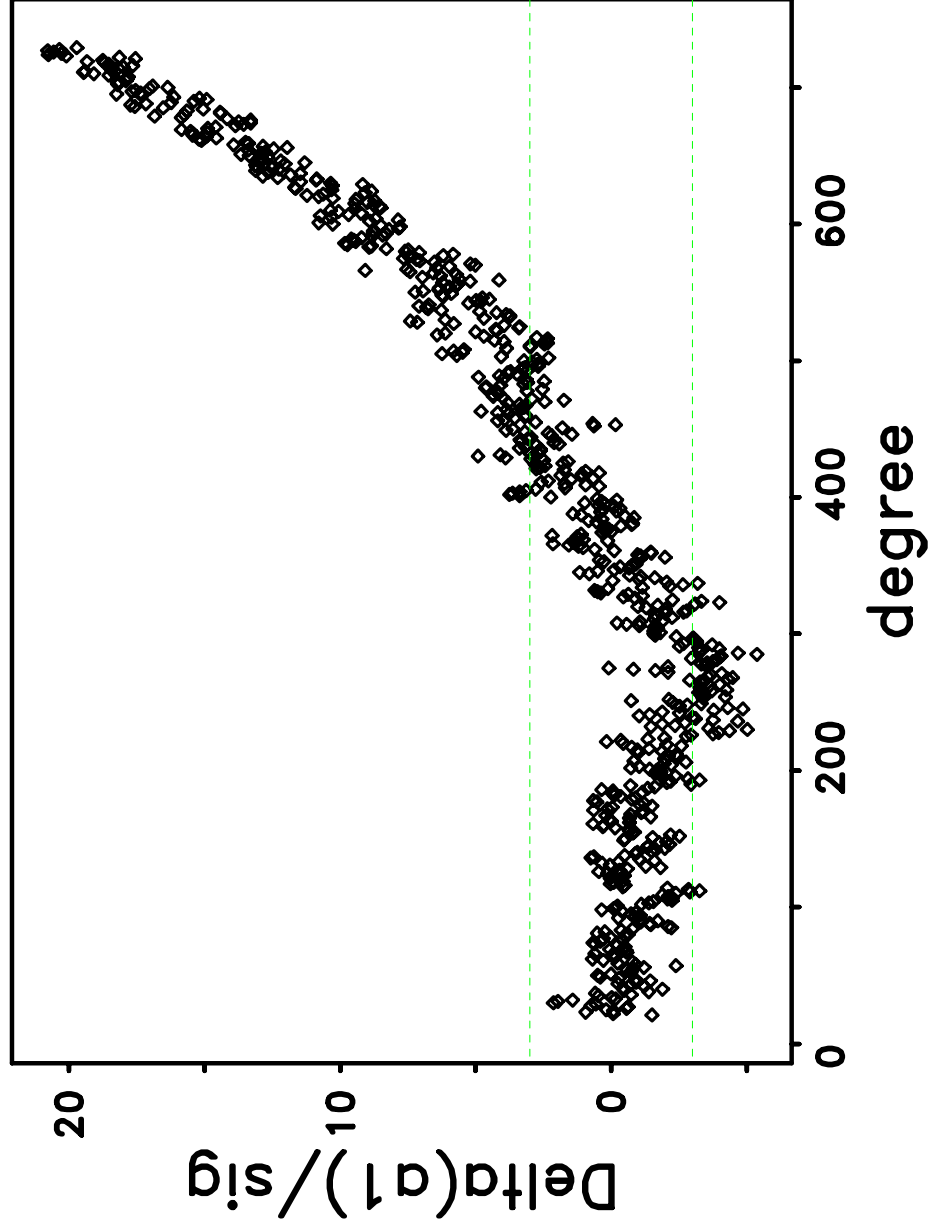
nv = 1, SSQ = 3.919E+04  
/home/jreiter/USC/wmltp/wmltp/mdi03d96/aux/HMI.100430to0710.mpts.v5c.spl.mod.da t  
rexp-3.lexp-1/splittings.out.6  
Thu Jan 21 18:39:14 2021



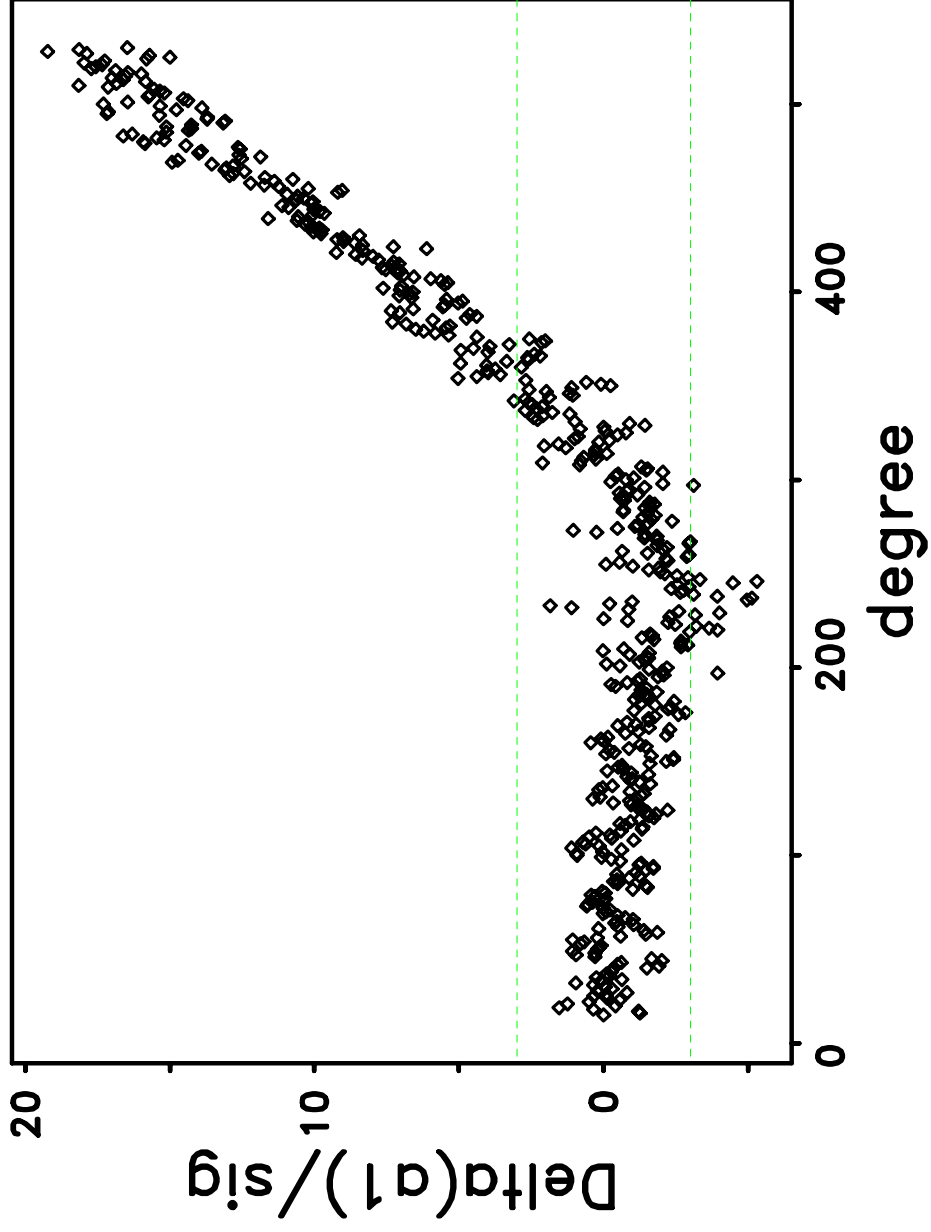
nv = 2, SSQ = 4.507E+04  
/home/jreiter/USC/wmltp/wmltp/mdi03d96/aux/HMI.100430to0710.mpts.v5c.spl.mod.da t  
rexp-3.lexp-1/splittings.out.6  
Thu Jan 21 18:39:14 2021



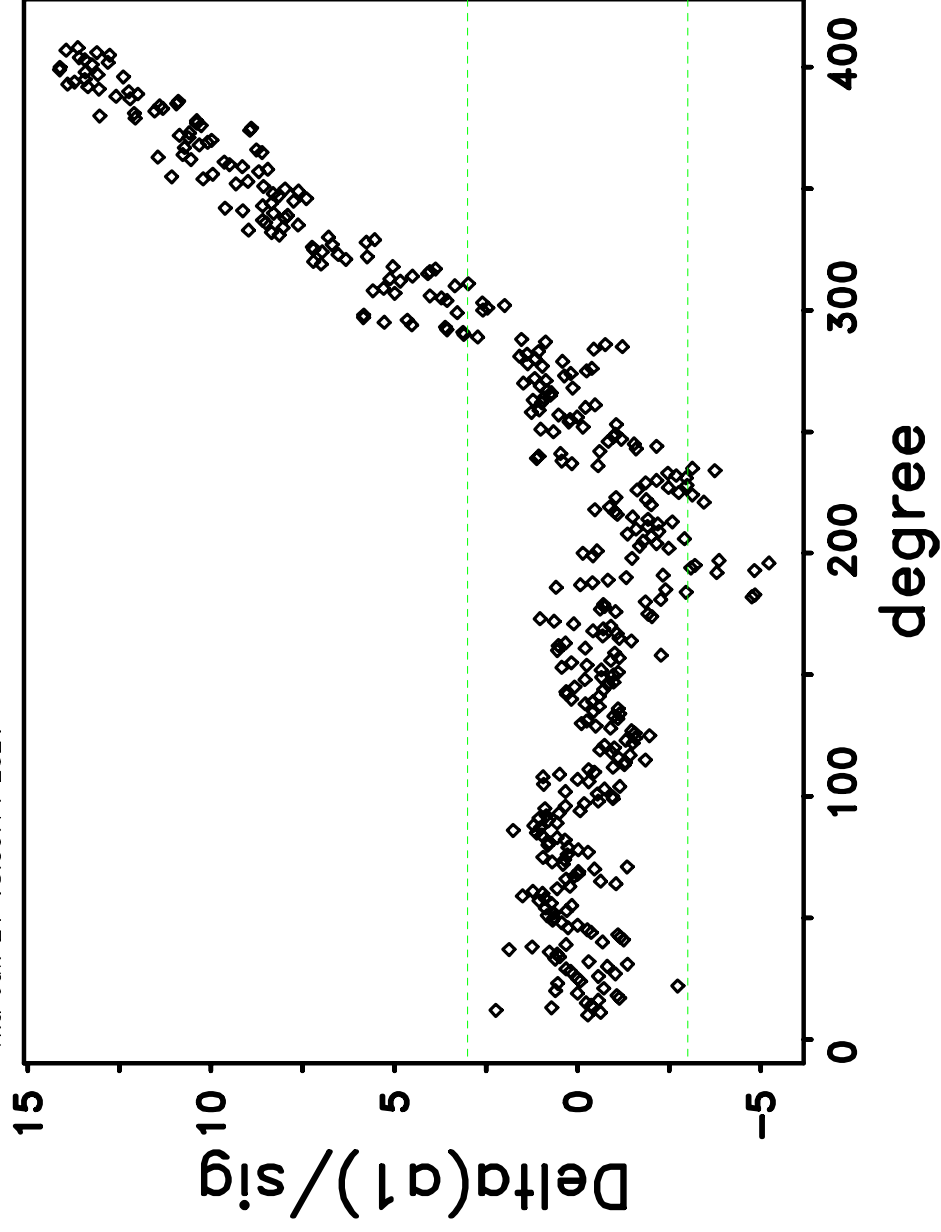
nv = 3, SSQ = 3.425E+04  
/home/jreiter/USC/wmltp/wmltp/mdi03d96/aux/HMI.100430to0710.mpts.v5c.spl.mod.da t  
rexp-3.lexp-1/splittings.out.6  
Thu Jan 21 18:39:14 2021



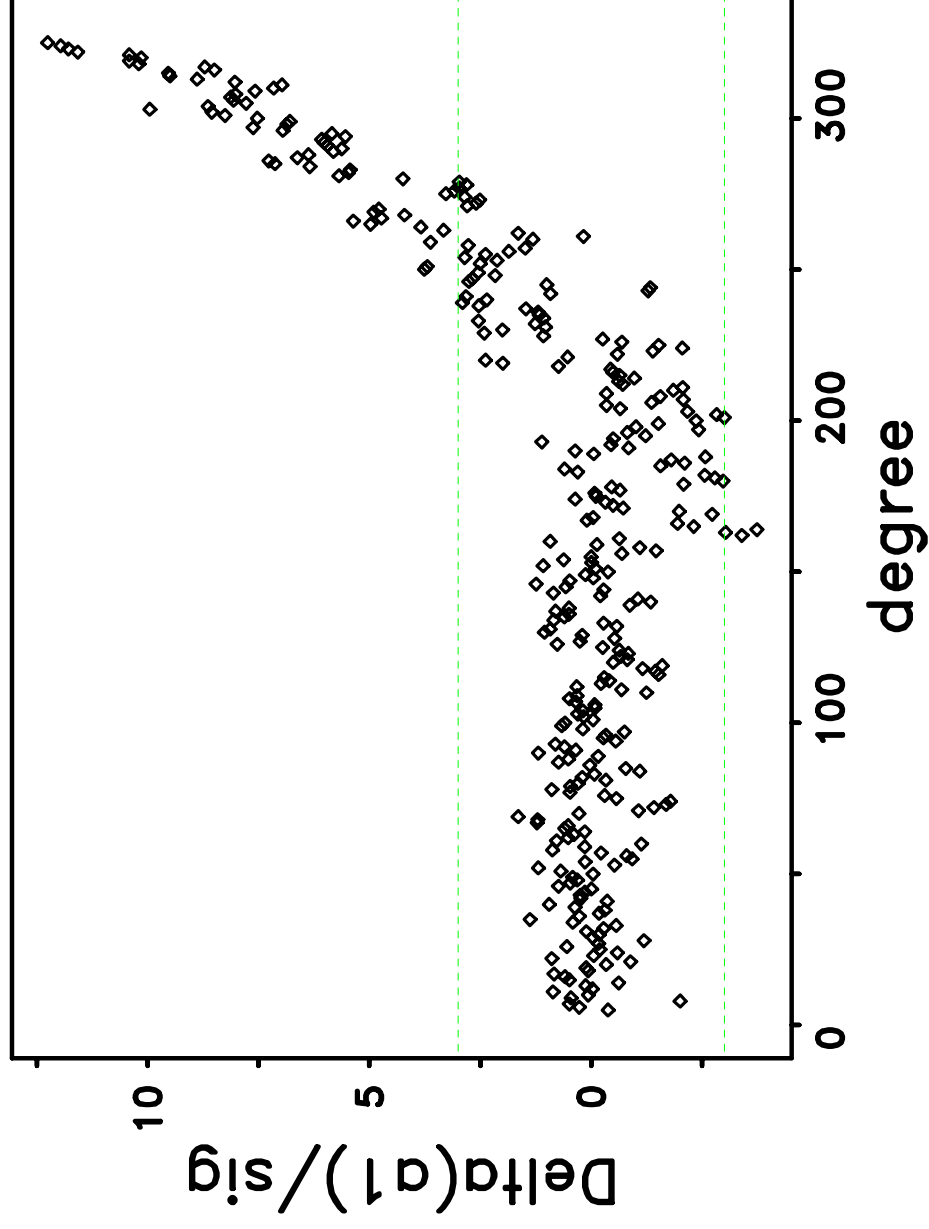
nv = 4, SSQ = 2.354E+04  
/home/jreiter/USC/wmltp/wmltp/mdi03d96/aux/HMI.100430to0710.mpts.v5c.spl.mod.da t  
rexp-3.lexp-1/splittings.out.6  
Thu Jan 21 18:39:14 2021



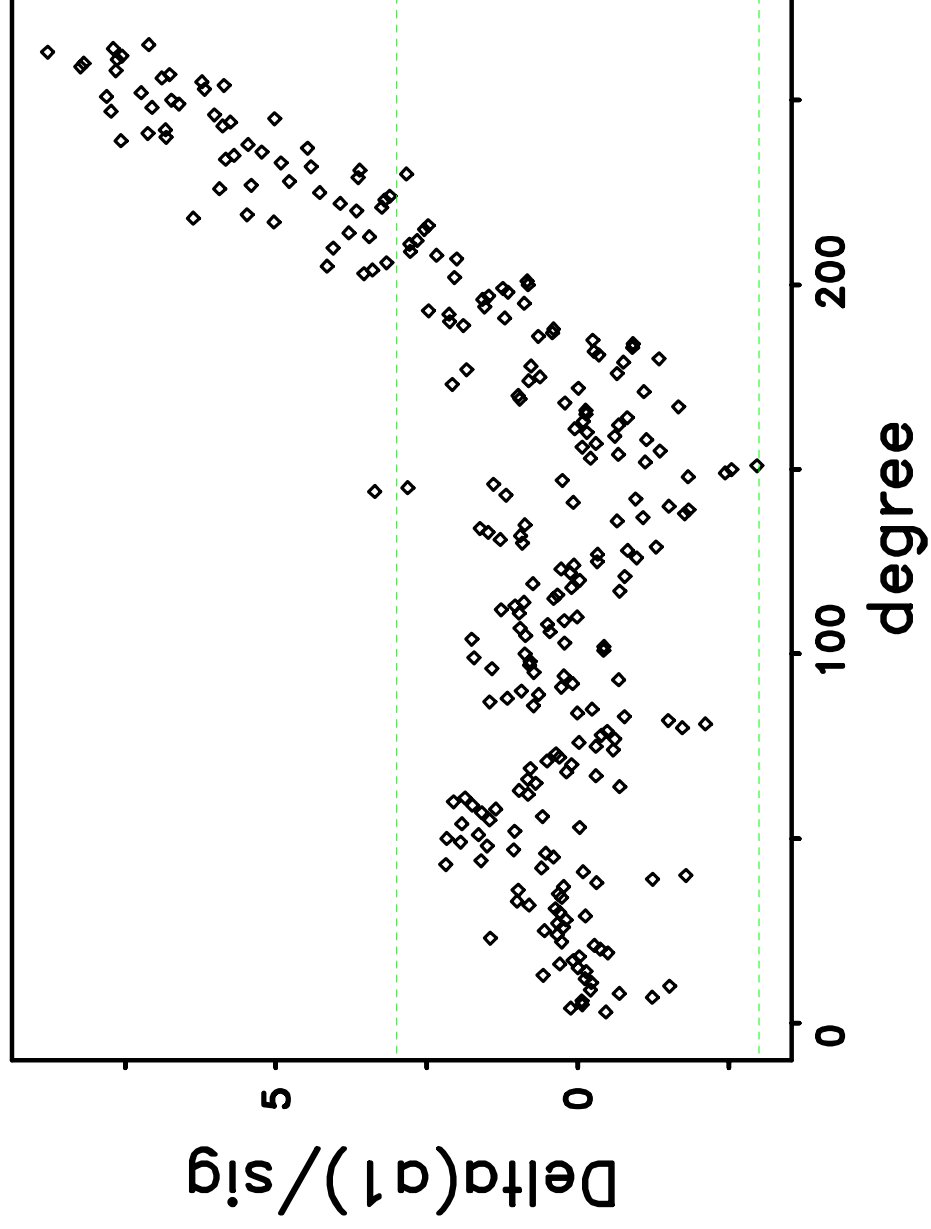
nv = 5, SSQ = 1.064E+04  
/home/jreiter/USC/wmltp/wmltp/mdi03d96/aux/HMI.100430to0710.mpts.v5c.spl.mod.da t  
rexp-3.lexp-1/splittings.out.6  
Thu Jan 21 18:39:14 2021



nv = 6, SSQ = 3.705E+03  
/home/jreiter/USC/wmltp/wmltp/mdi03d96/aux/HMI.100430to0710.mpts.v5c.spl.mod.da t  
rexp-3.lexp-1/splittings.out.6  
Thu Jan 21 18:39:14 2021

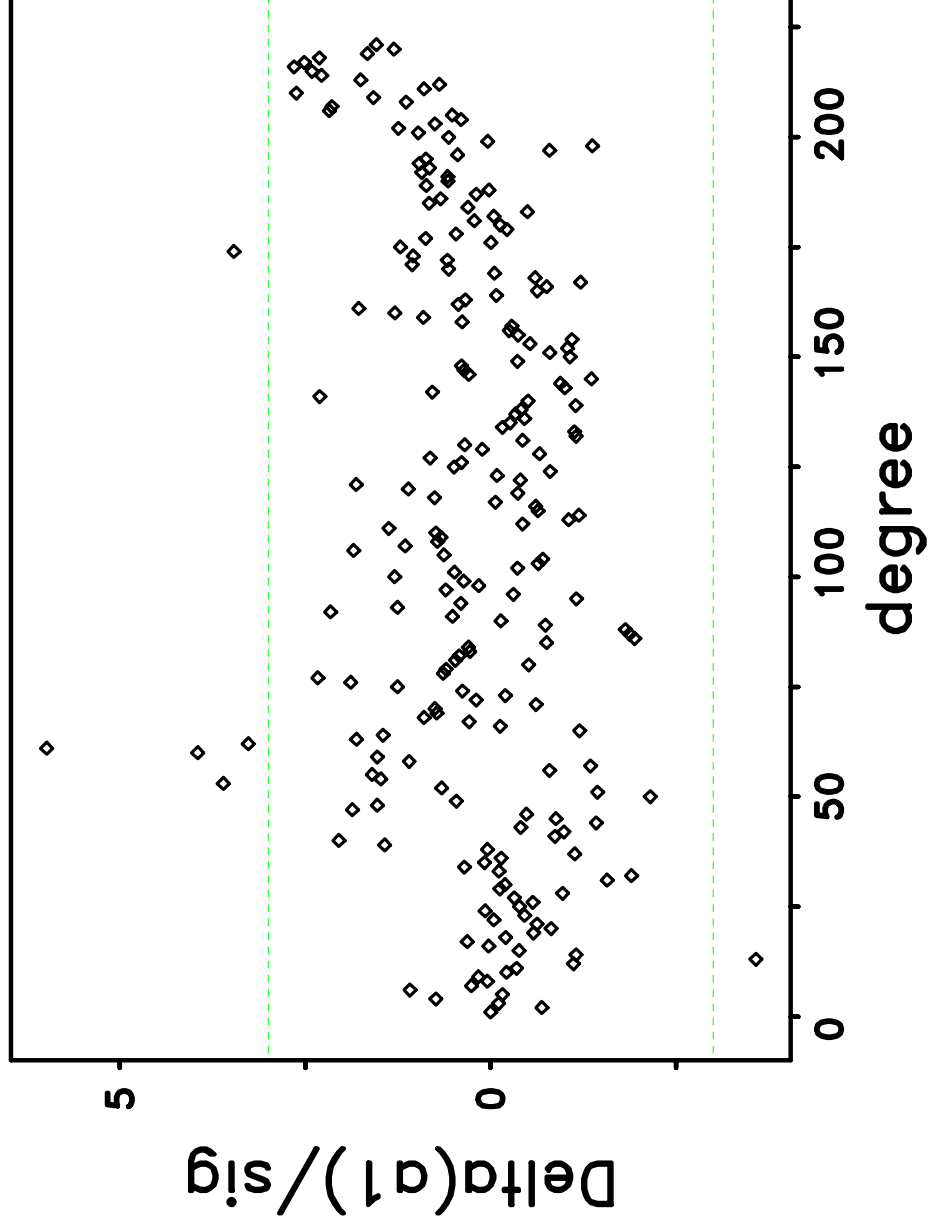


nv = 7, SSQ = 2.209E+03  
/home/jreiter/USC/wmltp/wmltp/mdi03d96/aux/HMI.100430to0710.mpts.v5c.spl.mod.da t  
rexp-3.lexp-1/splittings.out.6  
Thu Jan 21 18:39:14 2021

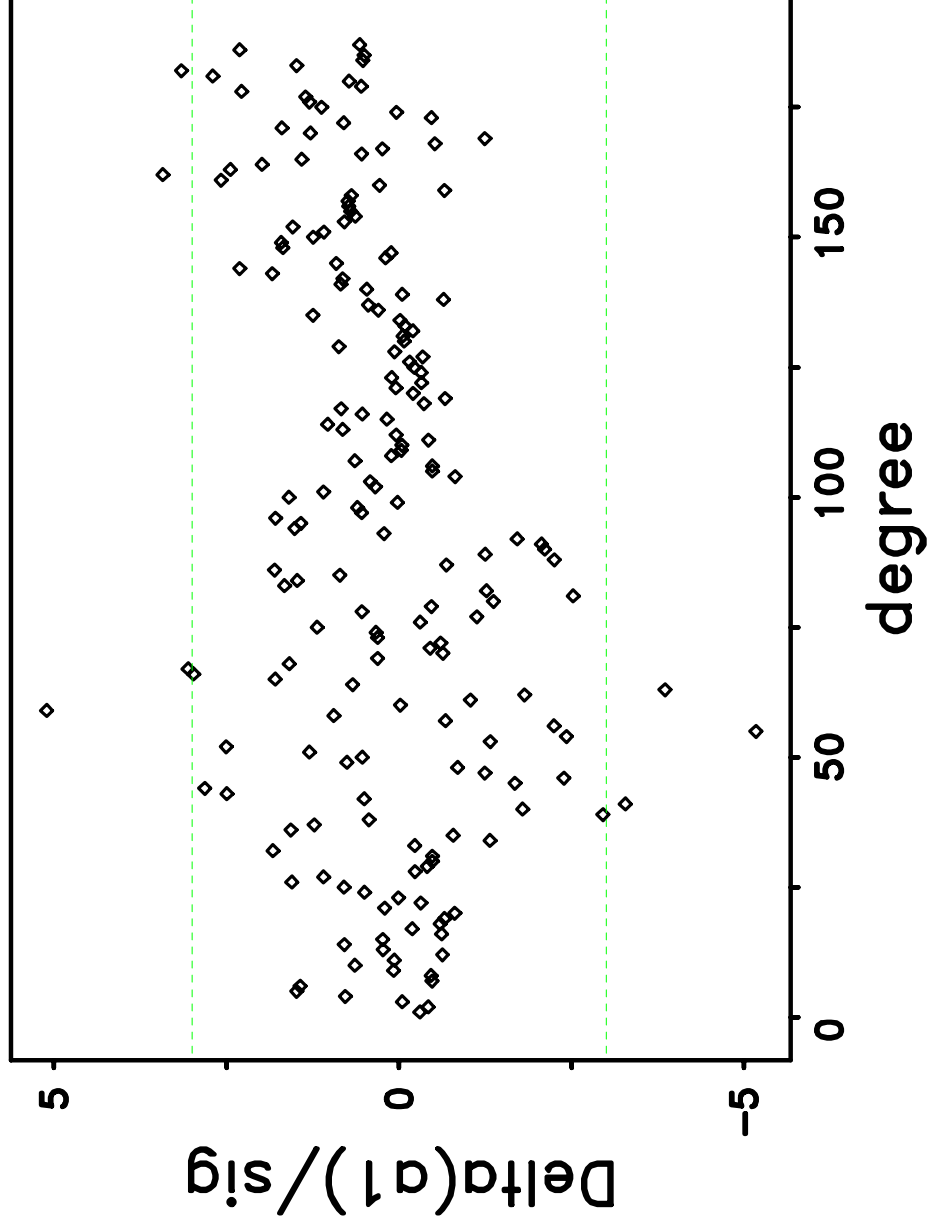




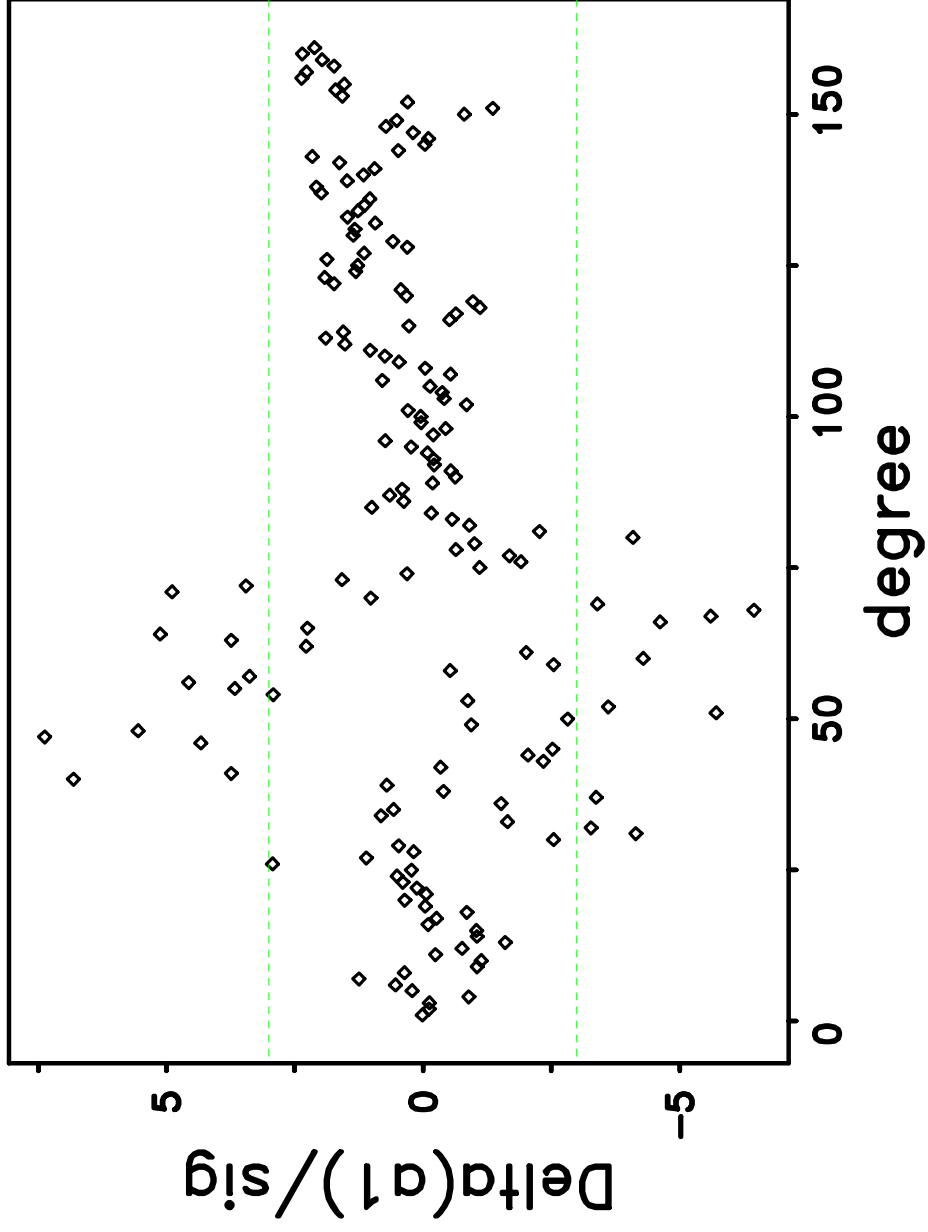
nv = 8, SSQ = 3.243E+02  
/home/jreiter/USC/wmltp/wmltp/mdi03d96/aux/HMI.100430to0710.mpts.v5c.spl.mod.da t  
rexp-3.lexp-1/splittings.out.6  
Thu Jan 21 18:39:14 2021



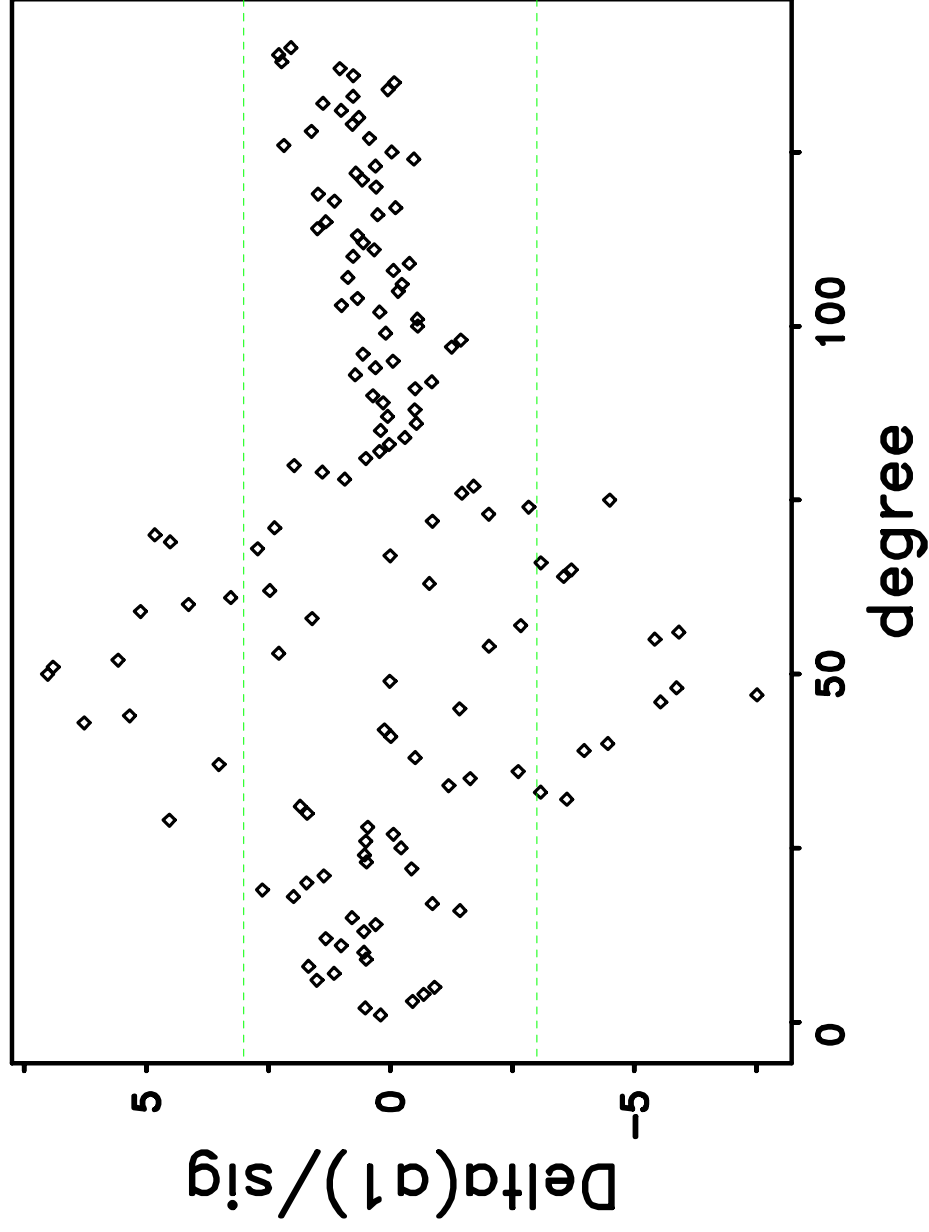
nv = 9, SSQ = 3.551E+02  
/home/jreiter/USC/wmltp/wmltp/mdi03d96/aux/HMI.100430to0710.mpts.v5c.spl.mod.da t  
rexp-3.lexp-1/splittings.out.6  
Thu Jan 21 18:39:14 2021



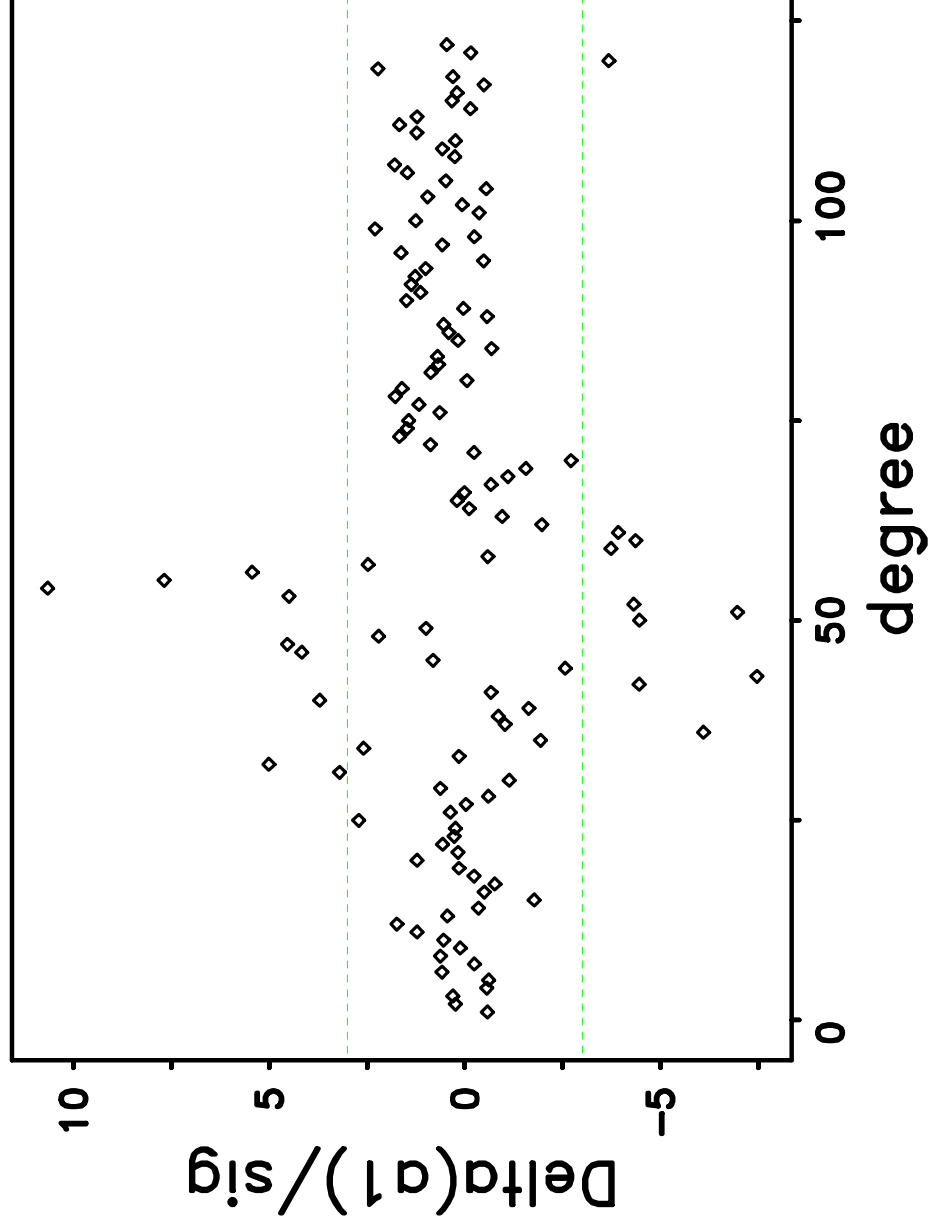
nv = 10, SSQ = 7.267E+02  
/home/jreiter/USC/wmltp/wmltp/mdi03d96/aux/HMI.100430to0710.mpts.v5c.spl.mod.da t  
rexp-3.lexp-1/splittings.out.6  
Thu Jan 21 18:39:14 2021



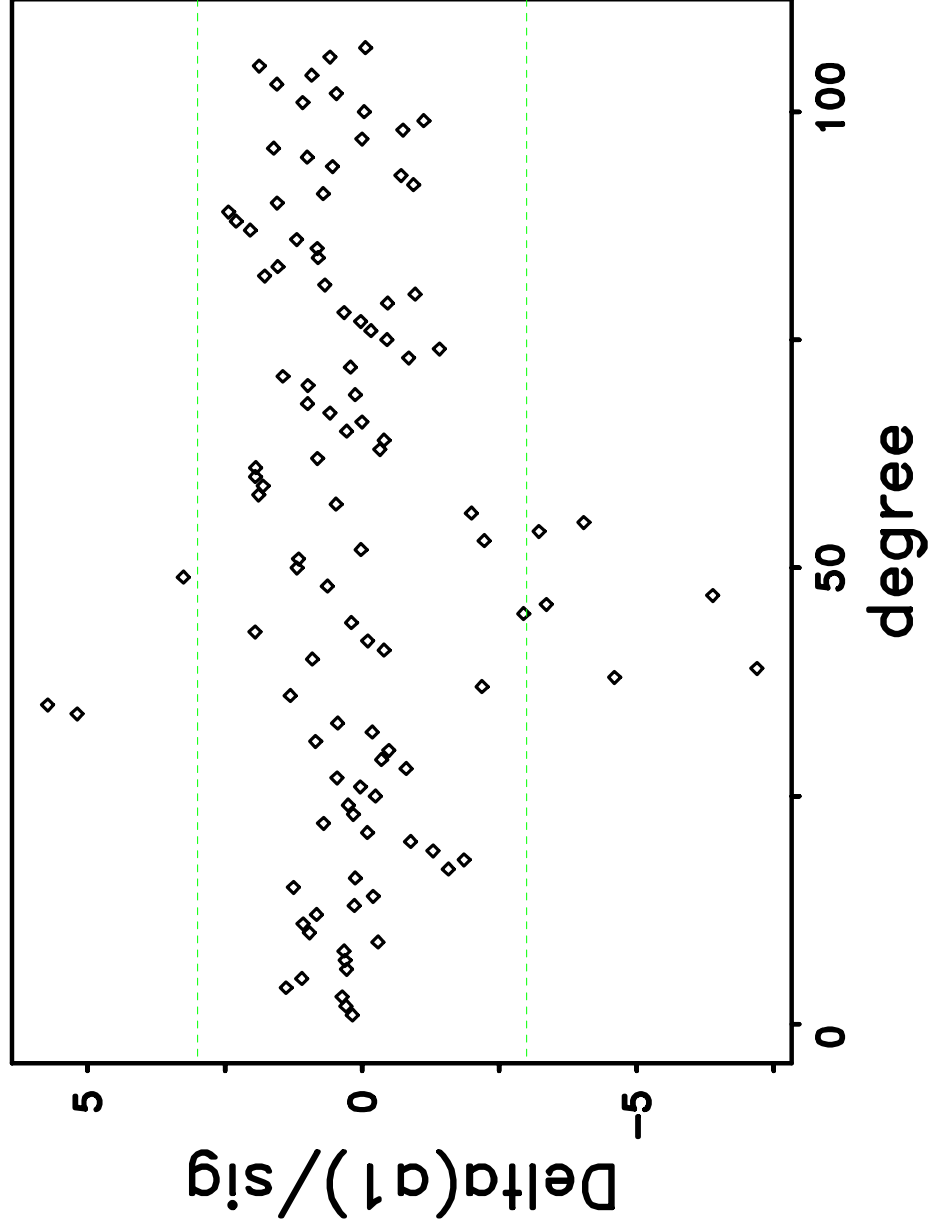
nv = 11, SSQ = 7.902E+02  
/home/jreiter/USC/wmltp/wmltp/mdi03d96/aux/HMI.100430to0710.mpts.v5c.spl.mod.da t  
rexp-3.lexp-1/splittings.out.6  
Thu Jan 21 18:39:14 2021



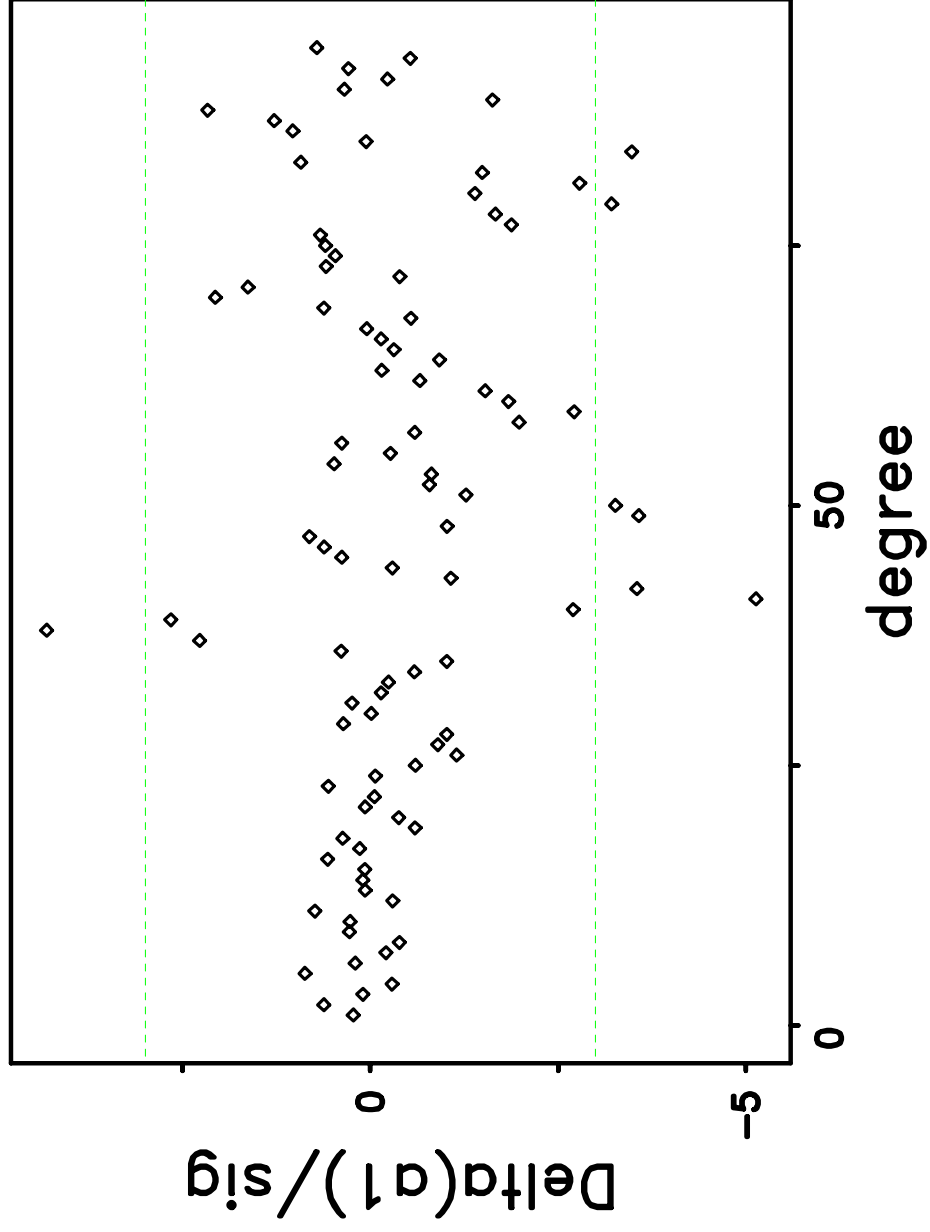
nv = 12, SSQ = 7.014E+02  
/home/jreiter/USC/wmltp/wmltp/mdi03d96/aux/HMI.100430to0710.mpts.v5c.spl.mod.da t  
rexp-3.lexp-1/splittings.out.6  
Thu Jan 21 18:39:14 2021



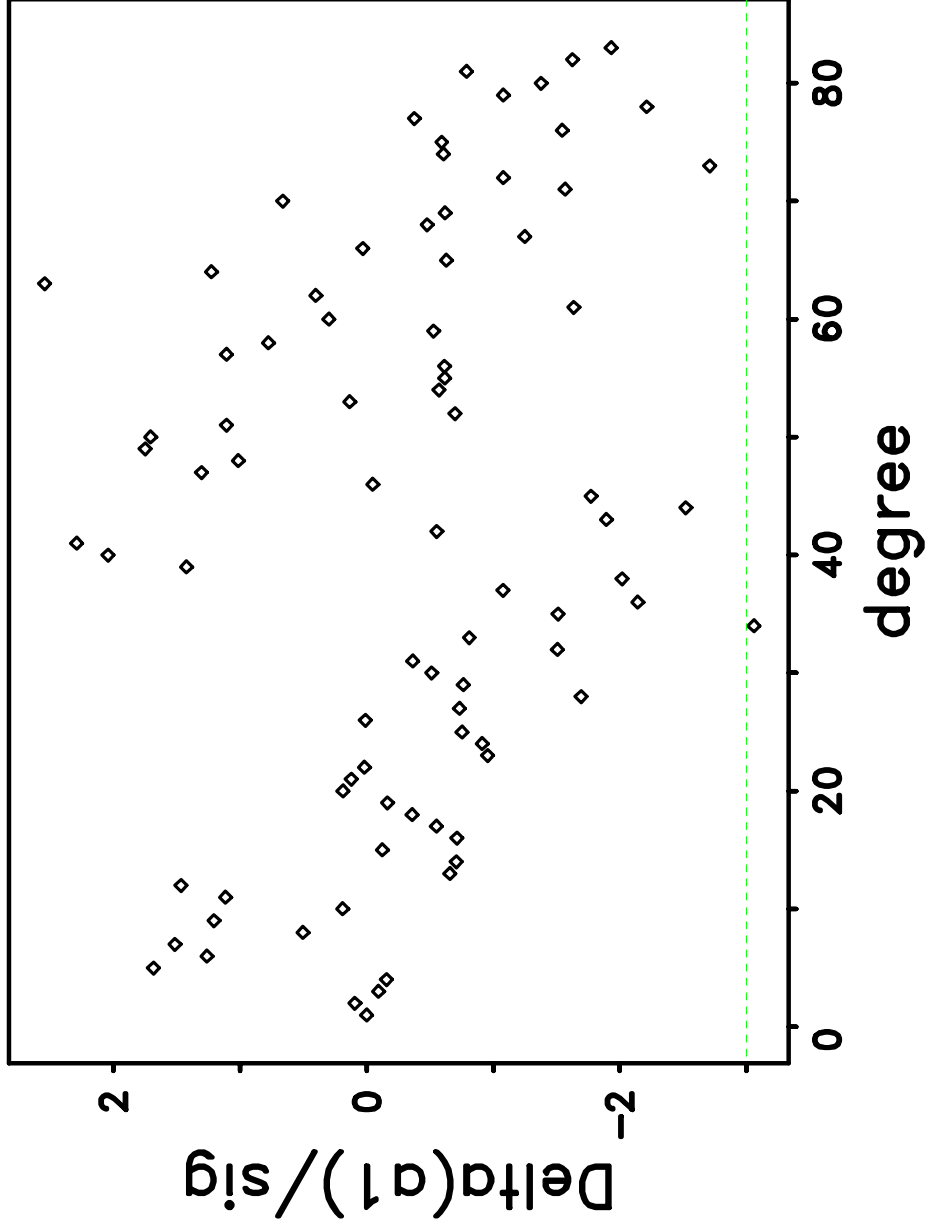
nv = 13, SSQ = 3.404E+02  
/home/jreiter/USC/wmltp/wmltp/mdi03d96/aux/HMI.100430to0710.mpts.v5c.spl.mod.da t  
rexp-3.lexp-1/splittings.out.6  
Thu Jan 21 18:39:14 2021



nv = 14, SSQ = 1.965E+02  
/home/jreiter/USC/wmltp/wmltp/mdi03d96/aux/HMI.100430to0710.mpts.v5c.spl.mod.da t  
rexp-3.lexp-1/splittings.out.6  
Thu Jan 21 18:39:14 2021

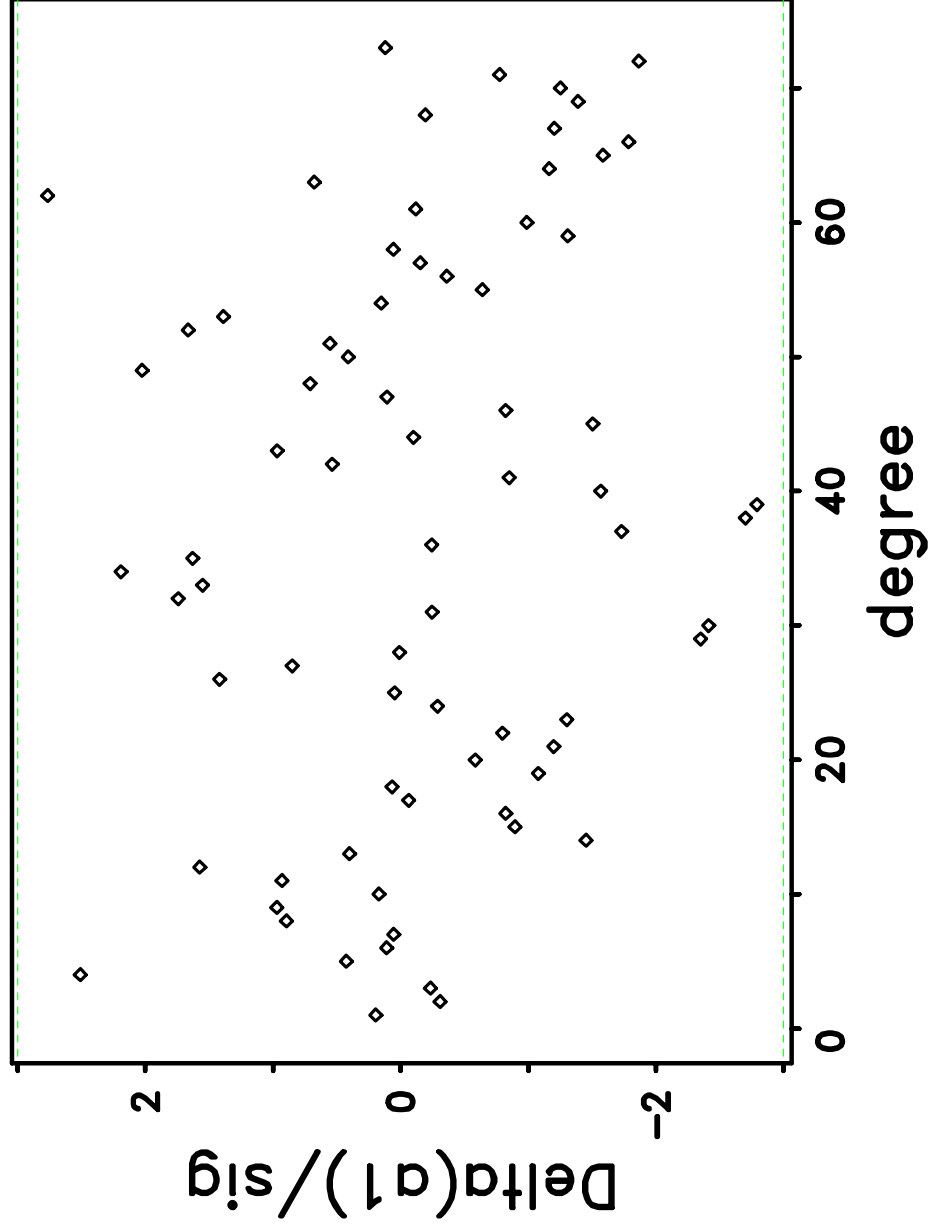


nv = 15, SSQ = 1.263E+02  
/home/jreiter/USC/wmltp/wmltp/mdi03d96/aux/HMI.100430to0710.mpts.v5c.spl.mod.da t  
rexp-3.lexp-1/splittings.out.6  
Thu Jan 21 18:39:14 2021

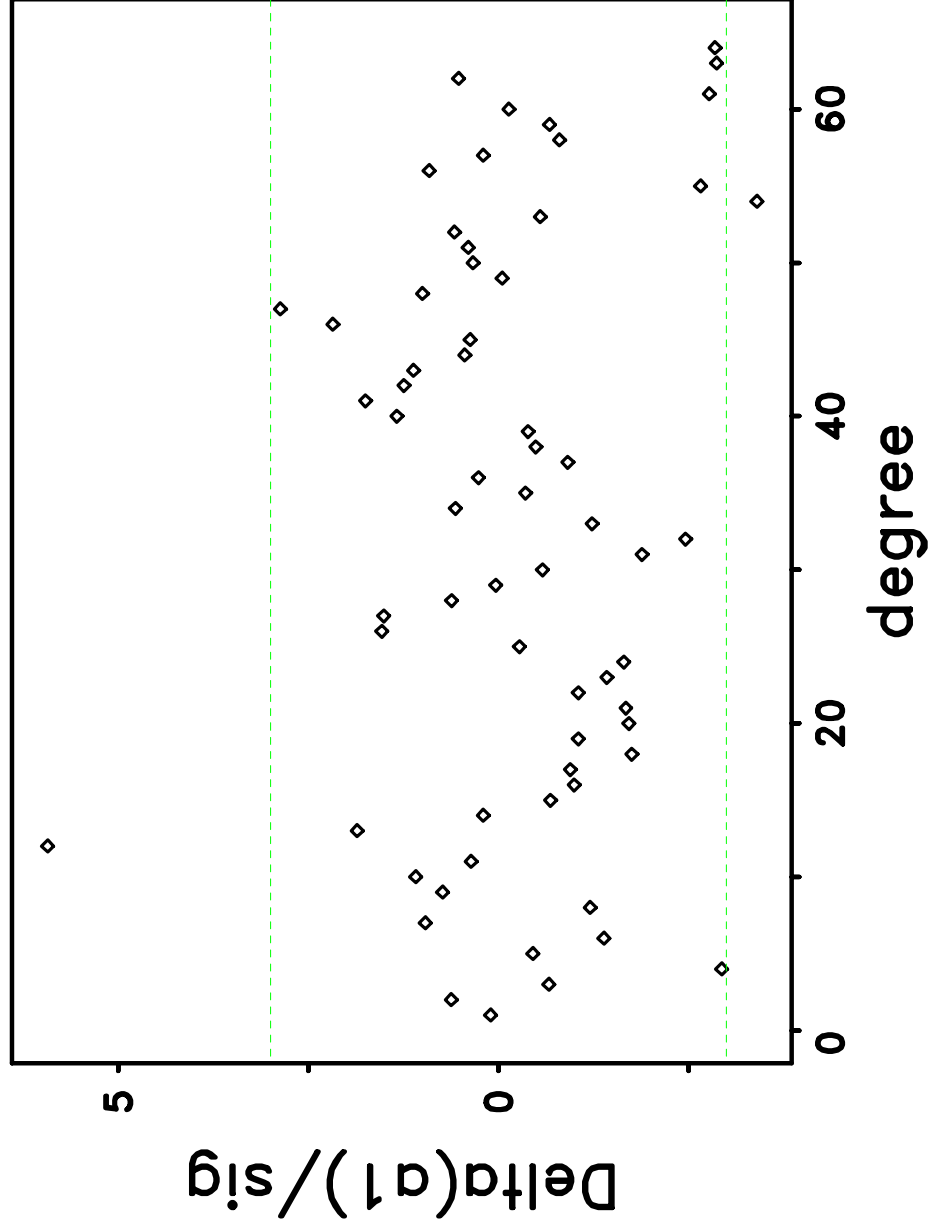




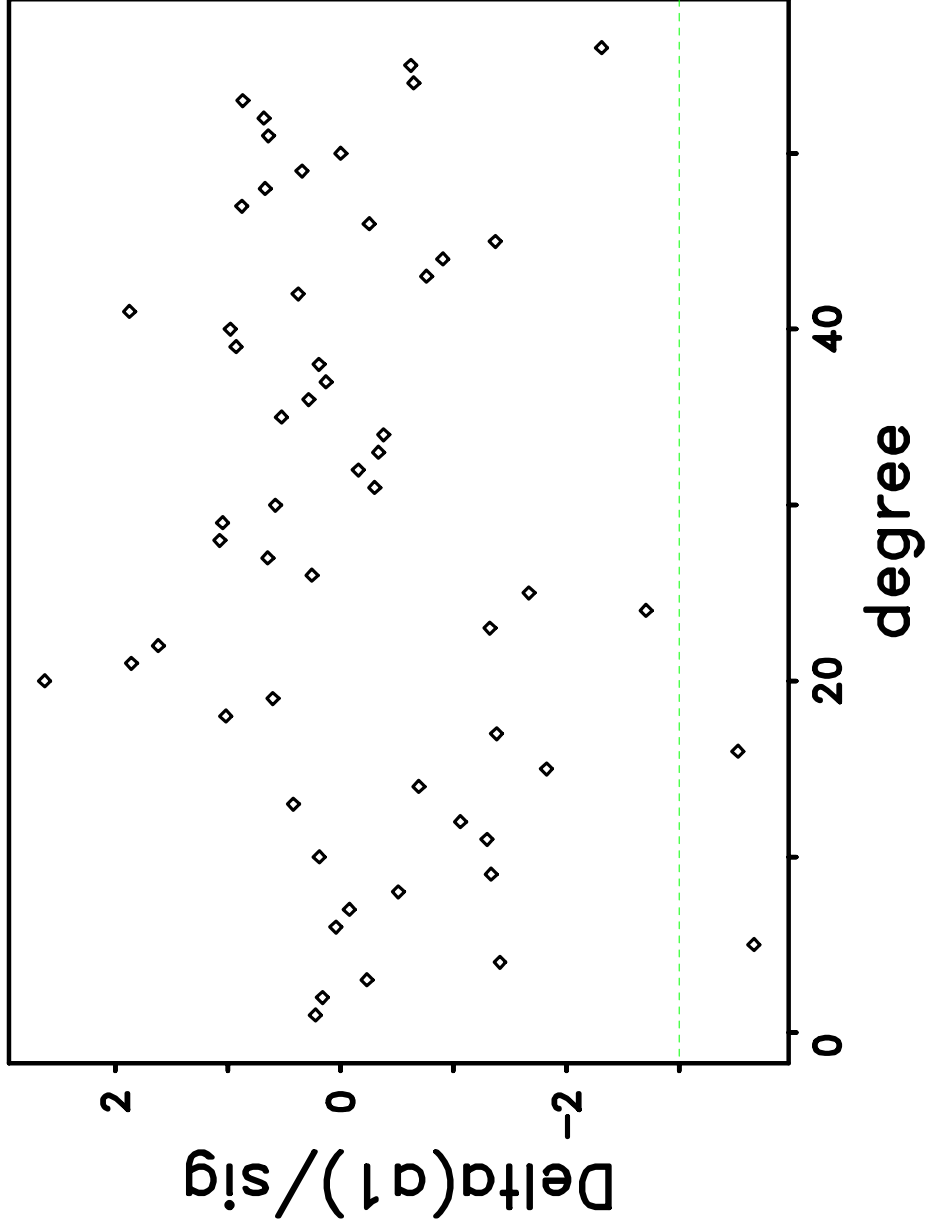
nv = 16, SSQ = 1.107E+02  
/home/jreiter/USC/wmltp/wmltp/mdi03d96/aux/HMI.100430to0710.mpts.v5c.spl.mod.da t  
rexp-3.lexp-1/splittings.out.6  
Thu Jan 21 18:39:14 2021



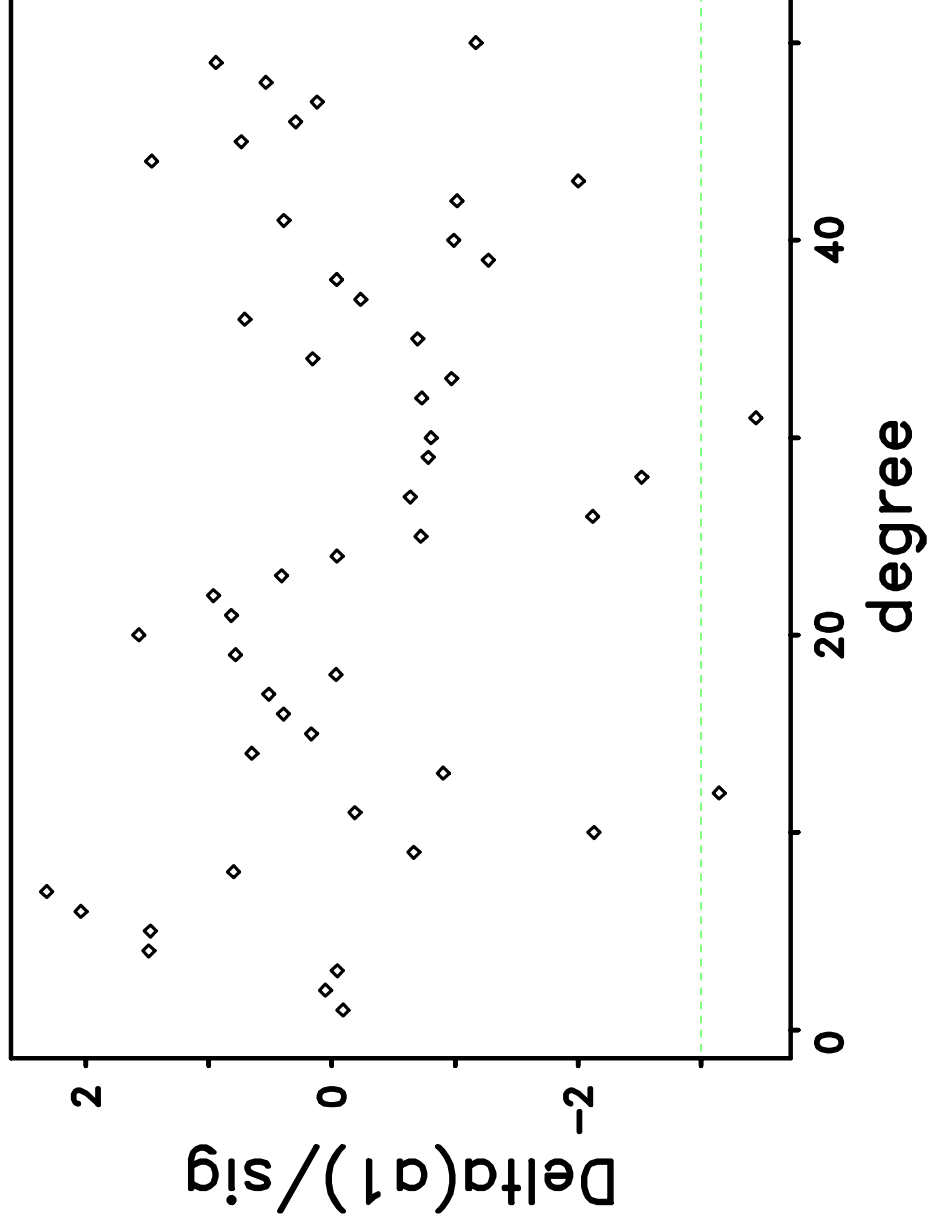
nv = 17, SSQ = 1.586E+02  
/home/jreiter/USC/wmltp/wmltp/mdi03d96/aux/HMI.100430to0710.mpts.v5c.spl.mod.da t  
rexp-3.lexp-1/splittings.out.6  
Thu Jan 21 18:39:14 2021



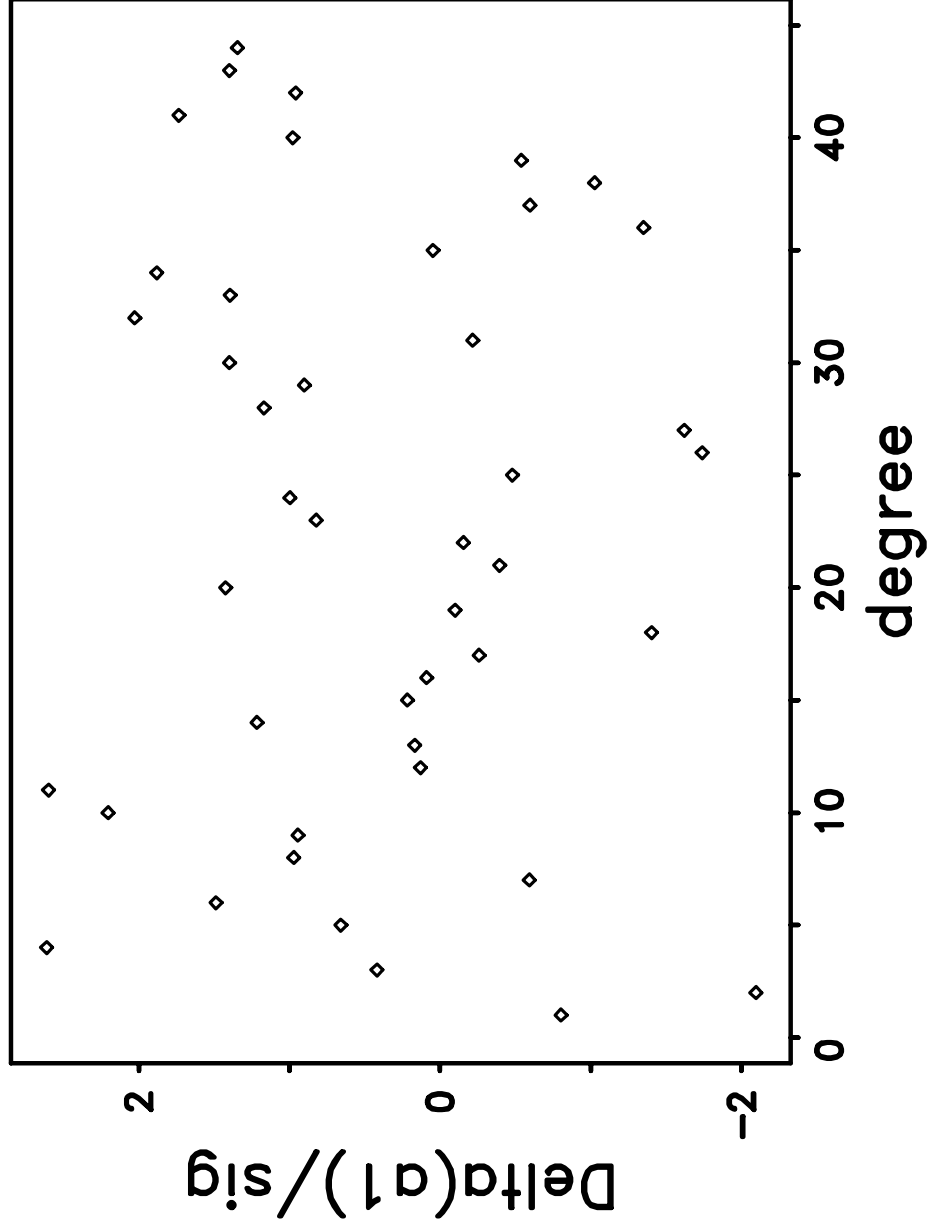
nv = 18, SSQ = 8.665E+01  
/home/jreiter/USC/wmltp/wmltp/mdi03d96/aux/HMI.100430to0710.mpts.v5c.spl.mod.da t  
rexp-3.lexp-1/splittings.out.6  
Thu Jan 21 18:39:14 2021



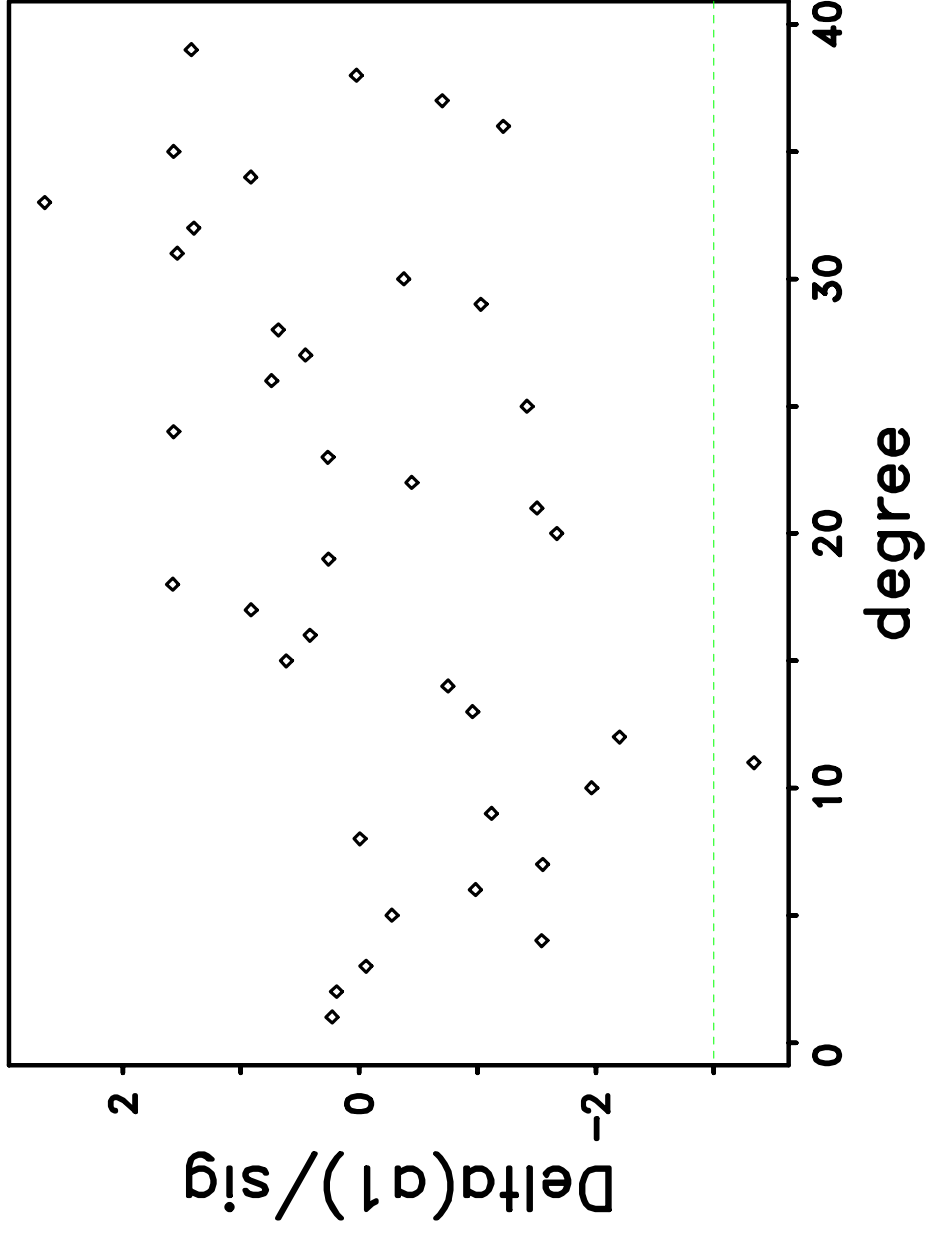
nv = 19, SSQ = 7.645E+01  
/home/jreiter/USC/wmltp/wmltp/mdi03d96/aux/HMI.100430to0710.mpts.v5c.spl.mod.da t  
rexp-3.lexp-1/splittings.out.6  
Thu Jan 21 18:39:14 2021



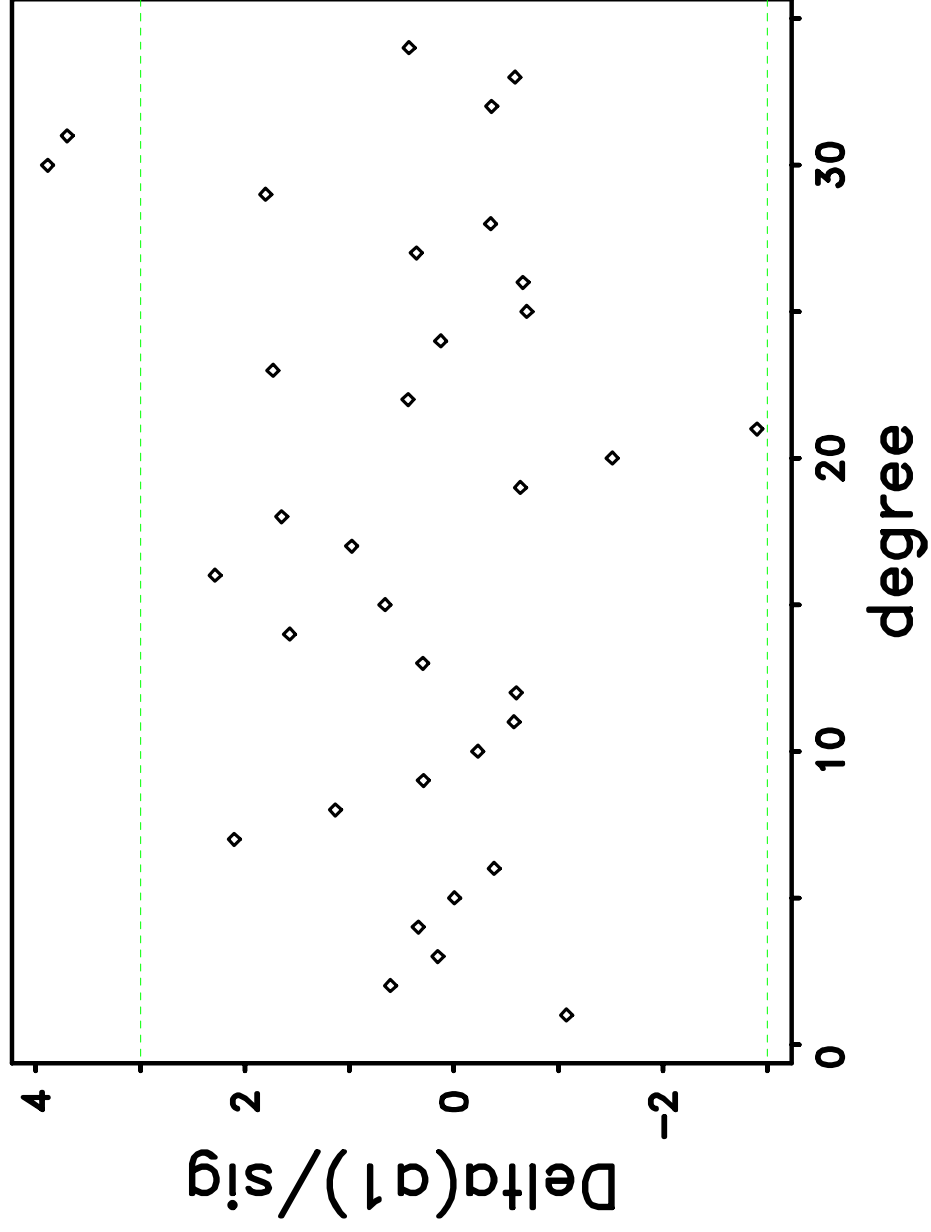
nv = 20, SSQ = 6.788E+01  
/home/jreiter/USC/wmltp/wmltp/mdi03d96/aux/HMI.100430to0710.mpts.v5c.spl.mod.da t  
rexp-3.lexp-1/splittings.out.6  
Thu Jan 21 18:39:14 2021



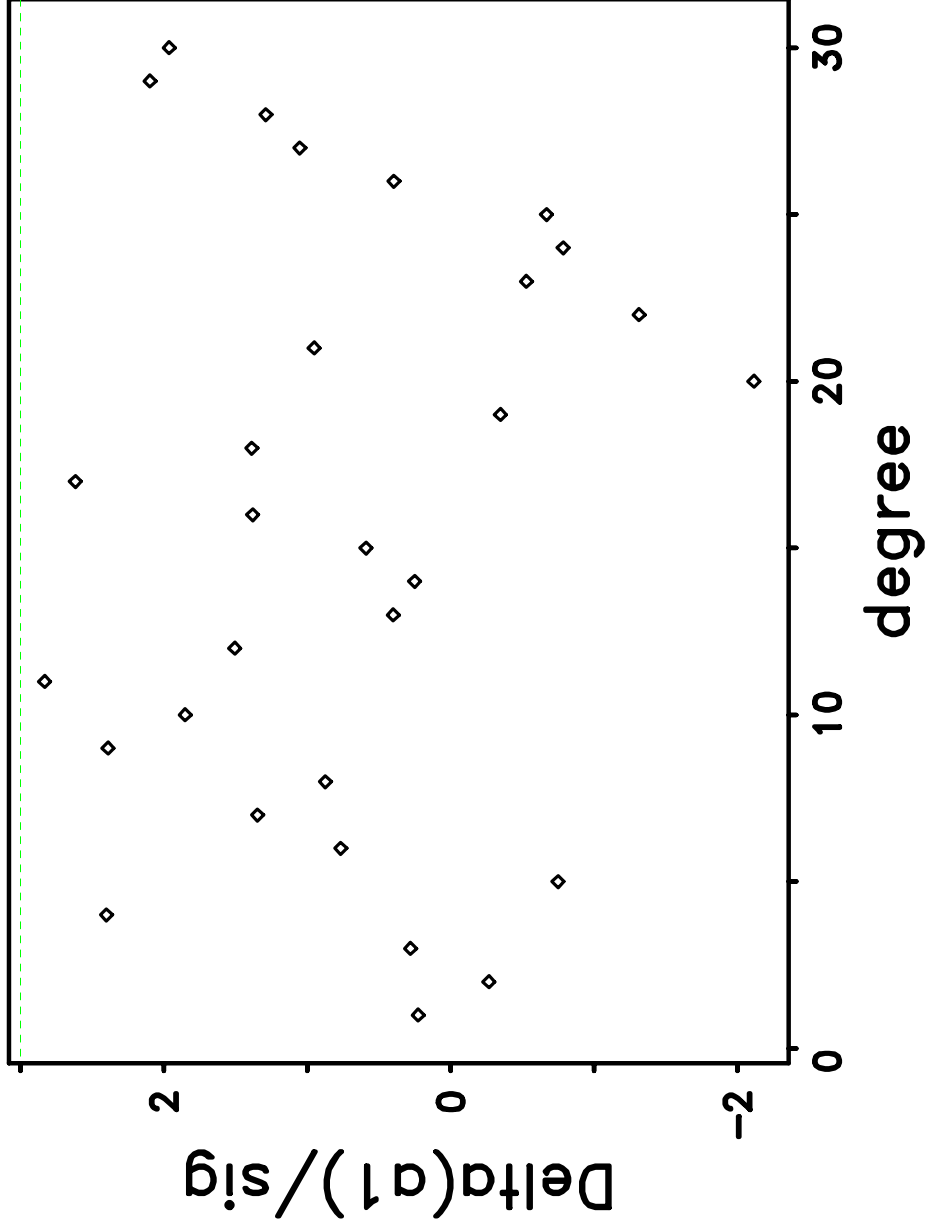
$n_V = 21$ ,  $SSQ = 6.334E+01$   
/home/jreiter/USC/wmltp/wmltp/mdi03d96/aux/HMI.100430to0710.mpts.v5c.spl.mod.da t  
rexp-3.lexp-1/splittings.out.6  
Thu Jan 21 18:39:14 2021



nv = 22, SSQ = 6.854E+01  
/home/jreiter/USC/wmltp/wmltp/mdi03d96/aux/HMI.100430to0710.mpts.v5c.spl.mod.da t  
rexp-3.lexp-1/splittings.out.6  
Thu Jan 21 18:39:14 2021

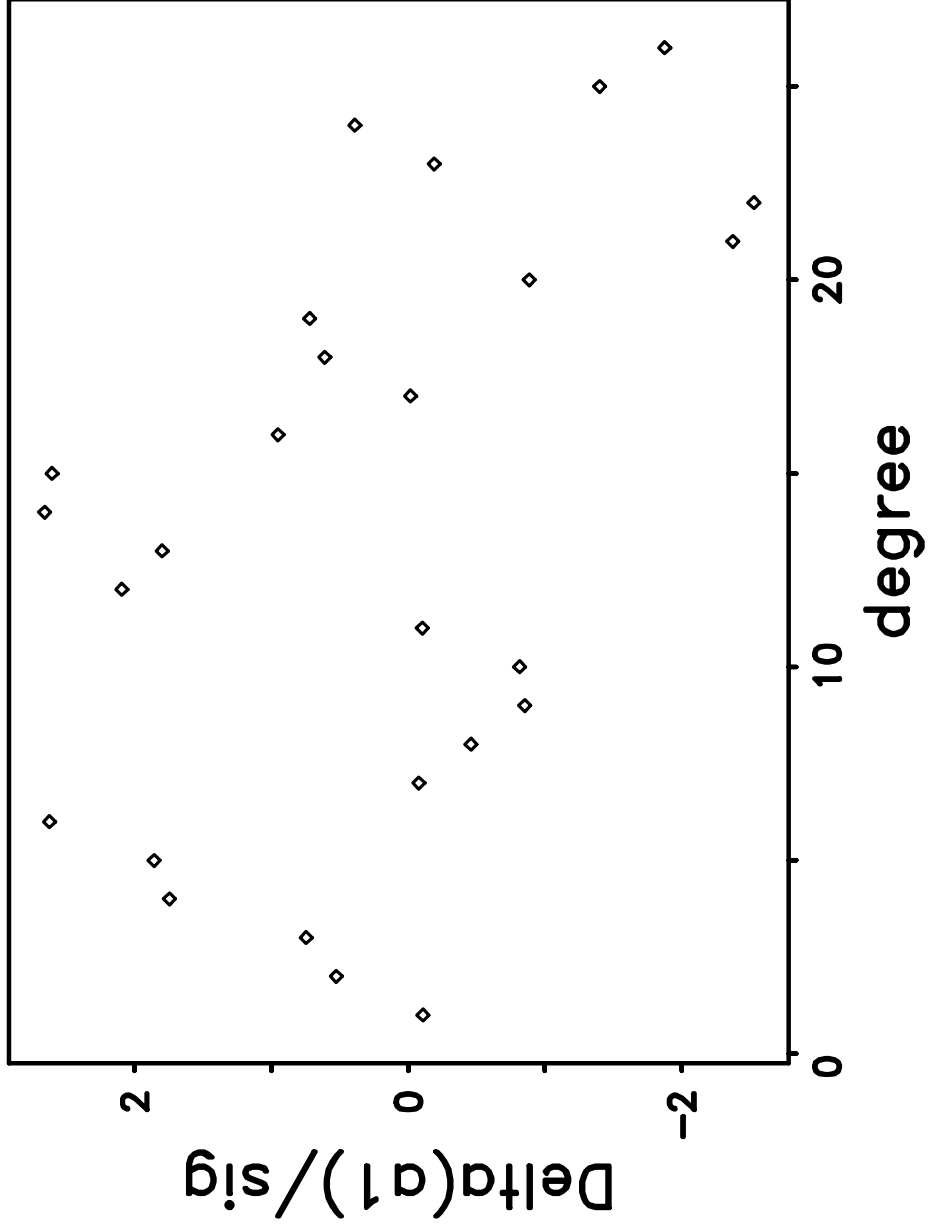


nv = 23, SSQ = 6.033E+01  
/home/jreiter/USC/wmltp/wmltp/mdi03d96/aux/HMI.100430to0710.mpts.v5c.spl.mod.da t  
rexp-3.lexp-1/splittings.out.6  
Thu Jan 21 18:39:14 2021

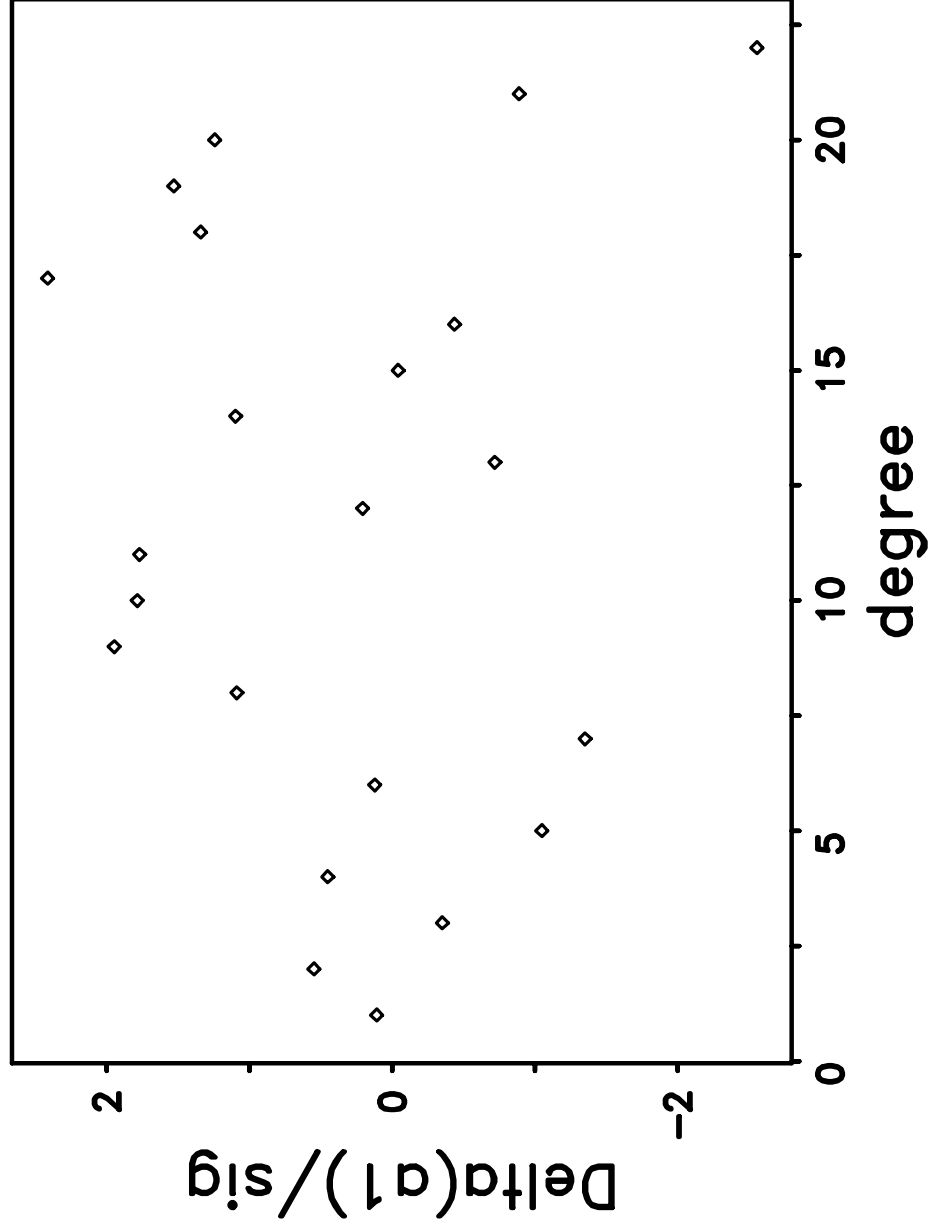




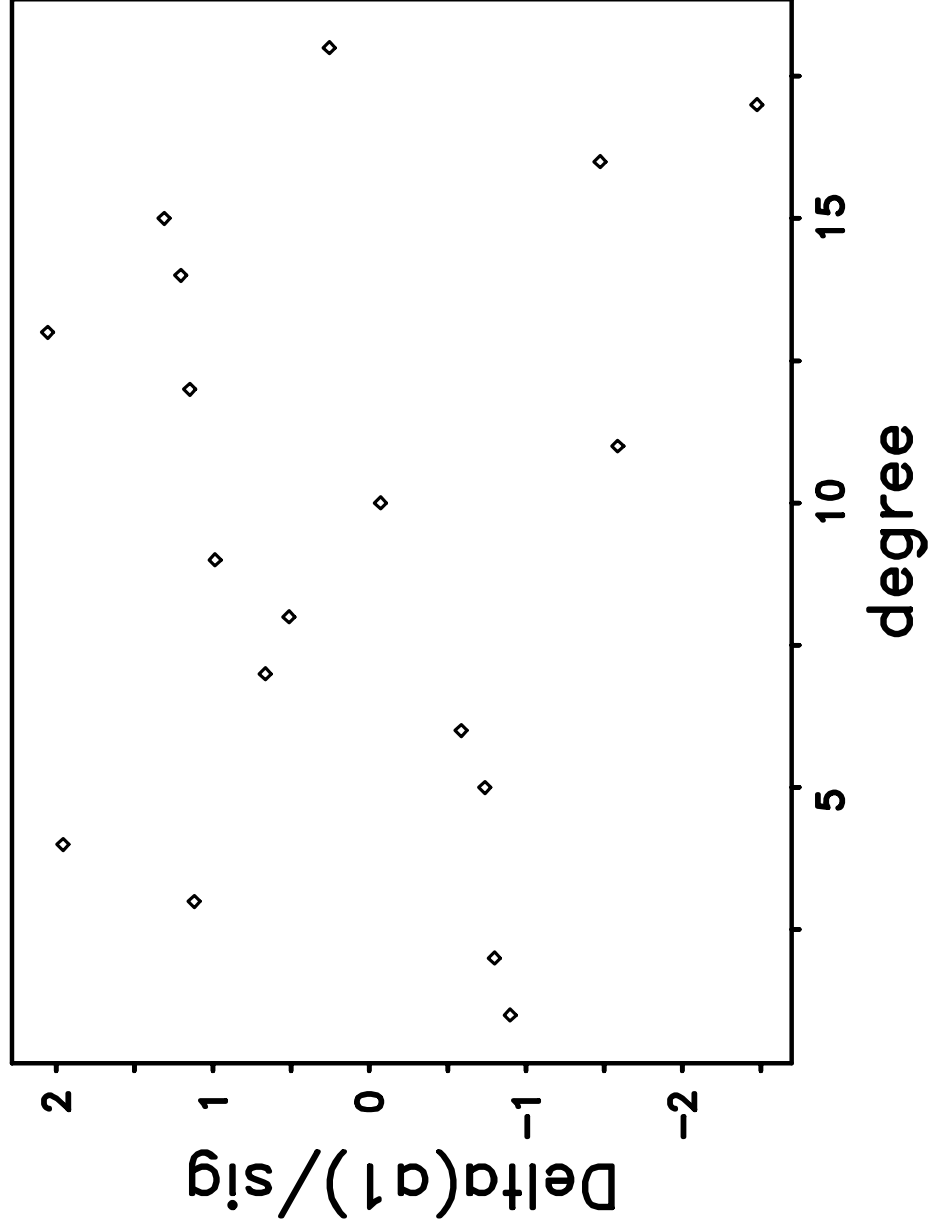
nv = 24, SSQ = 5.765E+01  
/home/jreiter/USC/wmltp/wmltp/mdi03d96/aux/HMI.100430to0710.mpts.v5c.spl.mod.da t  
rexp-3.lexp-1/splittings.out.6  
Thu Jan 21 18:39:14 2021



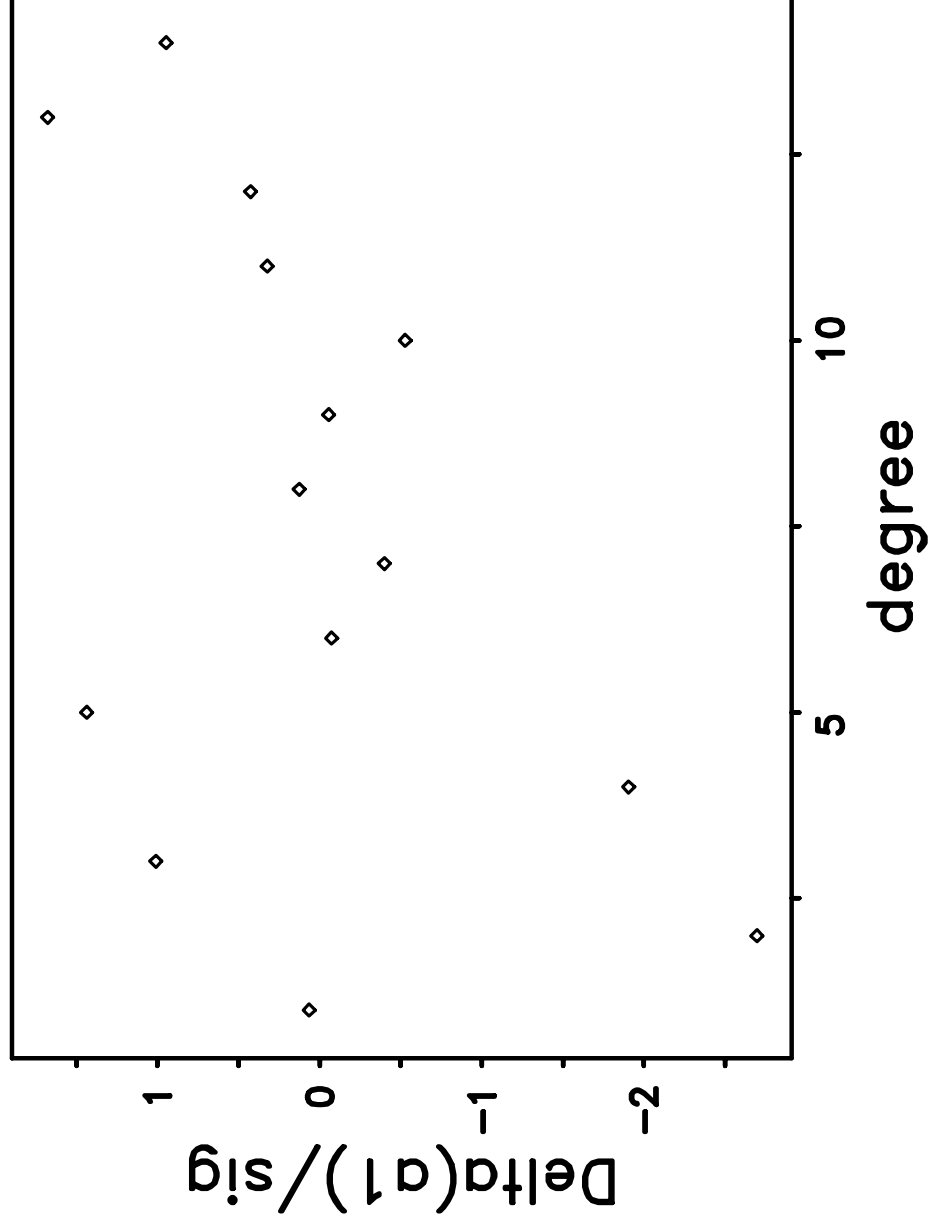
nv = 25, SSQ = 3.571E+01  
/home/jreiter/USC/wmltp/wmltp/mdi03d96/aux/HMI.100430to0710.mpts.v5c.spl.mod.da t  
rexp-3.lexp-1/splittings.out.6  
Thu Jan 21 18:39:14 2021



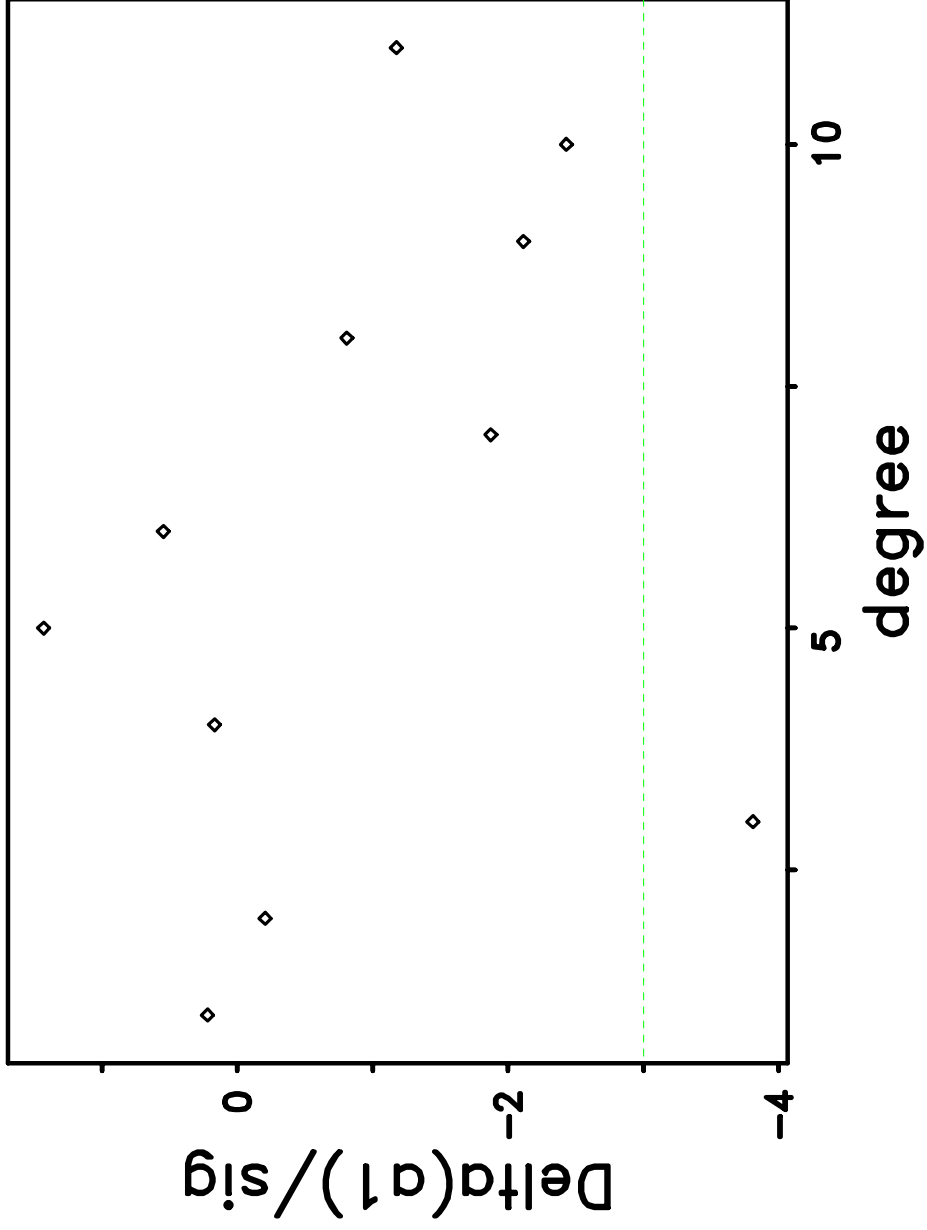
nv = 26, SSQ = 2.872E+01  
/home/jreiter/USC/wmltp/wmltp/mdi03d96/aux/HMI.100430to0710.mpts.v5c.spl.mod.da t  
rexp-3.lexp-1/splittings.out.6  
Thu Jan 21 18:39:14 2021



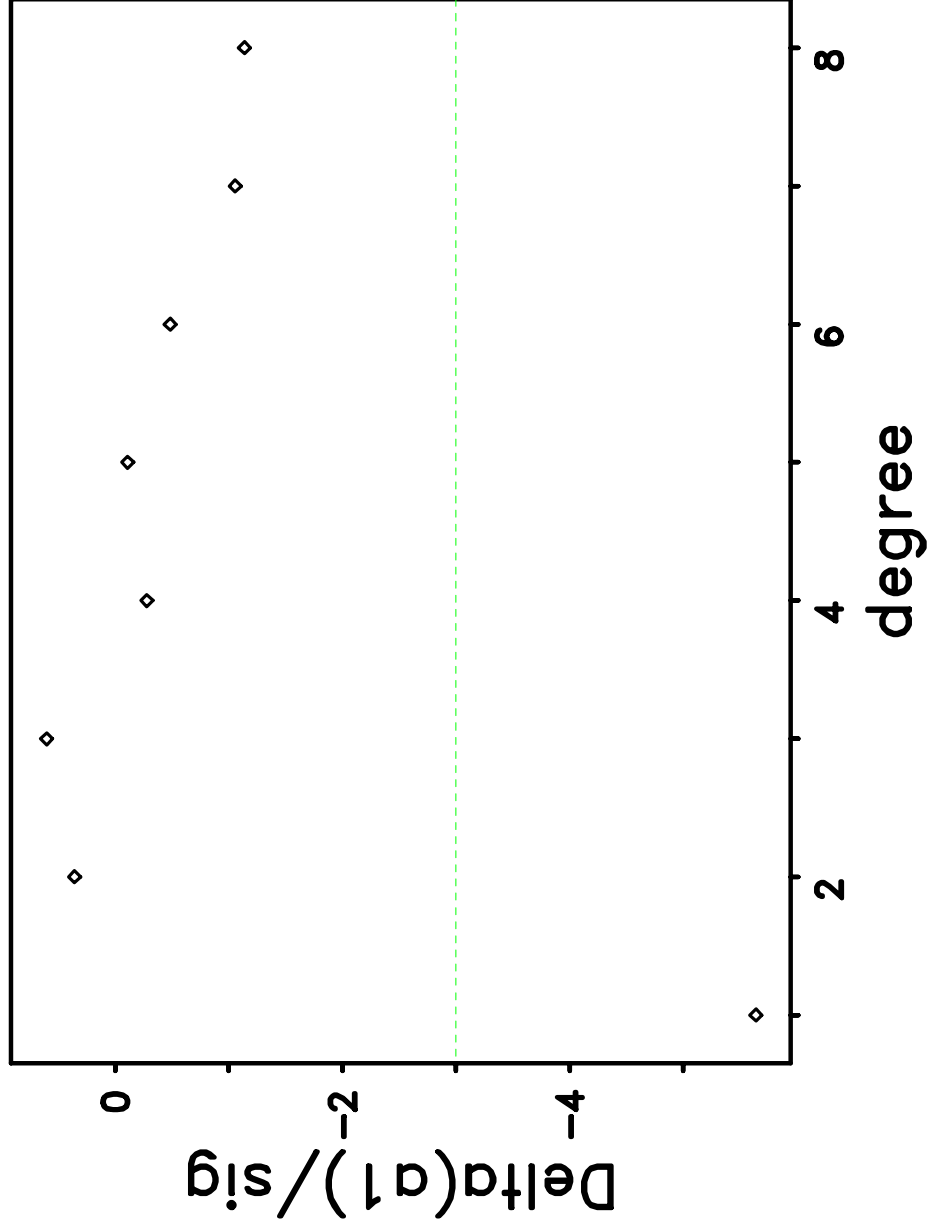
nv = 27, SSQ = 1.844E+01  
/home/jreiter/USC/wmltp/wmltp/mdi03d96/aux/HMI.100430to0710.mpts.v5c.spl.mod.da t  
rexp-3.lexp-1/splittings.out.6  
Thu Jan 21 18:39:14 2021



nv = 28, SSQ = 3.281E+01  
/home/jreiter/USC/wmltp/wmltp/mdi03d96/aux/HMI.100430to0710.mpts.v5c.spl.mod.da t  
rexp-3.lexp-1/splittings.out.6  
Thu Jan 21 18:39:14 2021



nv = 29, SSQ = 3.495E+01  
/home/jreiter/USC/wmltp/wmltp/mdi03d96/aux/HMI.100430to0710.mpts.v5c.spl.mod.da t  
rexp-3.lexp-1/splittings.out.6  
Thu Jan 21 18:39:14 2021



nv = 30, SSQ = 5.284E+00  
/home/jreiter/USC/wmltp/wmltp/mdi03d96/aux/HMI.100430to0710.mpts.v5c.spl.mod.da t  
rexp-3.lexp-1/splittings.out.6  
Thu Jan 21 18:39:14 2021

