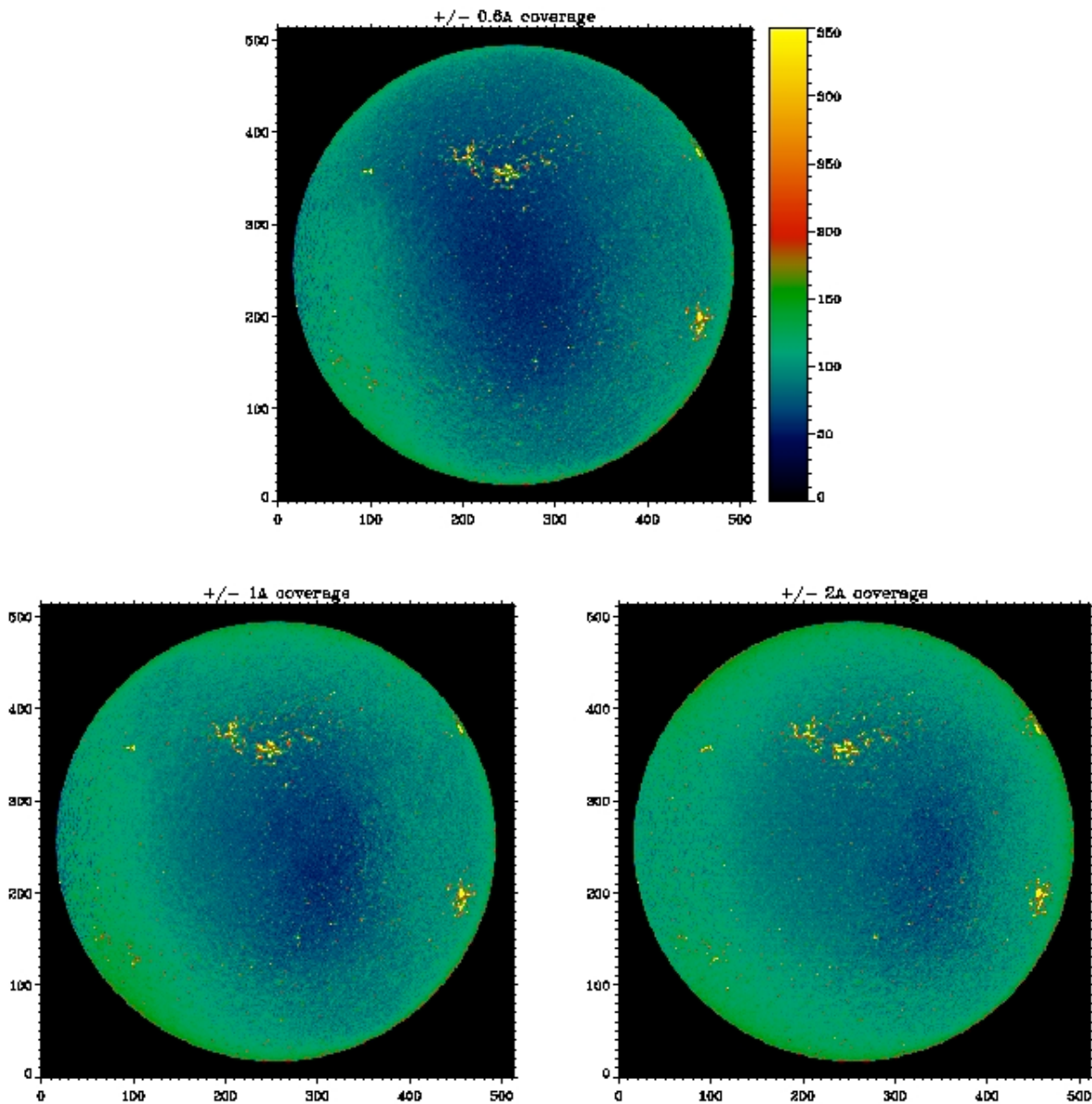
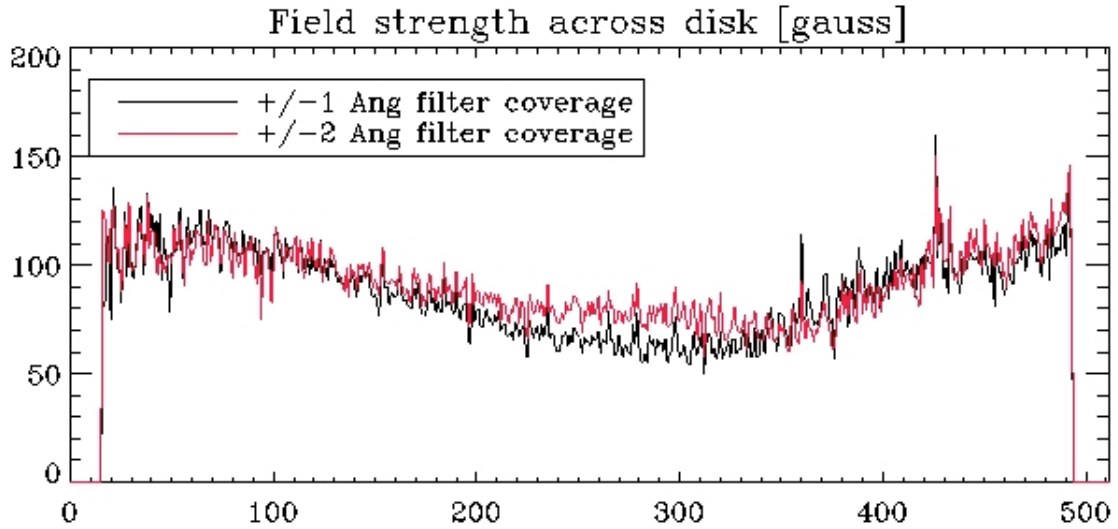


March 4, 2011

I started getting some of the results, and plotted the 1 Å coverage against the 2 Å coverage for the 04:00:00 dataset. In terms of the spatial variation across the disk, I can appreciate some changes, and it seems that the 2 Å inversion smooths out a bit the problem.





Figures: results for the inferred magnetic field strength (top panel was obtained with the original wavelength coverage of $\pm 0.648 \text{ \AA}$, and the other two are for a ± 1 Angstrom wavelength coverage and a ± 2 Angstrom wavelength coverage. The panels are saturated at 350 gauss. The plot on the second page shows a horizontal cut of the ± 1 and $\pm 2 \text{ \AA}$ coverage cases.